

(SCALE: 1" = 100')

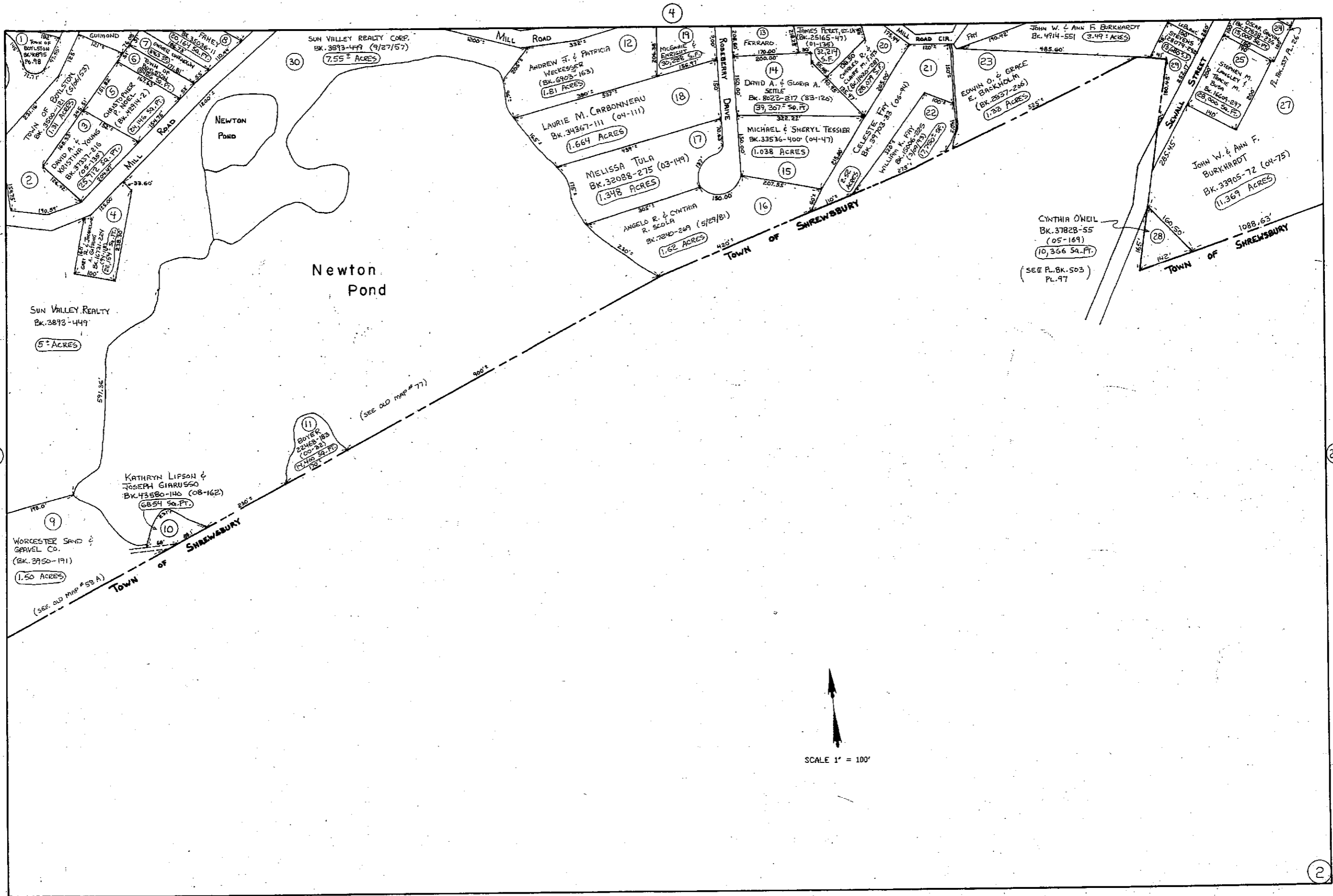
TOWN OF SHREWSBURY

STEVEN J. & WENDY T. RSTOLO BK. 5929-270 (5/17/76)

WORCESTER COUNTY HOSPITAL

TOWN OF WEST BOYLSTON

TOWN OF SHREWSBURY



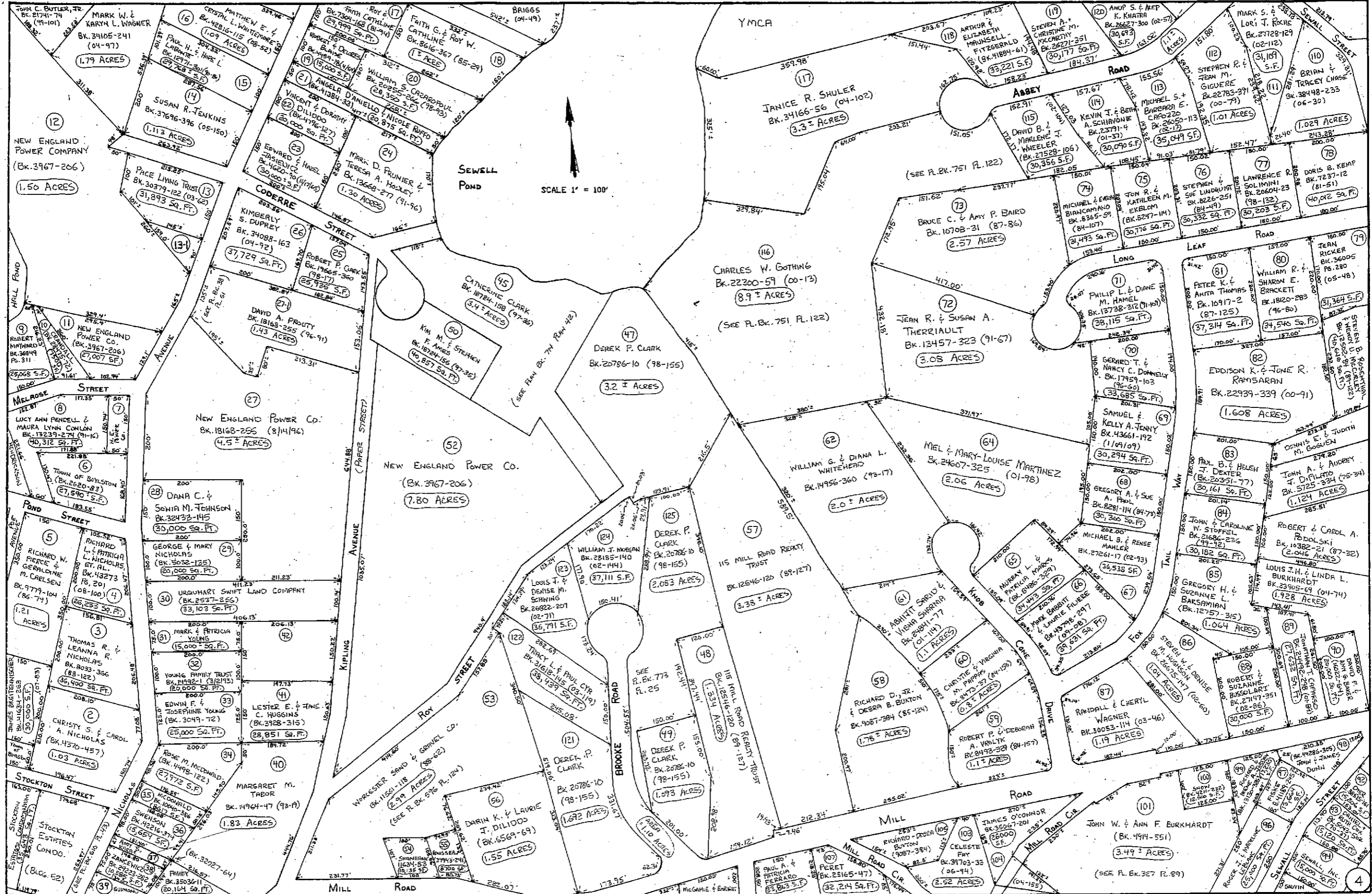


WORCESTER COUNTY HOSPITAL

WORCESTER COUNTY HOSPITAL



TOWN OF WEST BOYLSTON



SCALE 1" = 100'

SEWELL POND

YMCA

JANICE R. SHULER  
BK. 34166-56 (04-102)  
3.3 ACRES

CHARLES W. GORING  
BK. 22200-59 (00-12)  
8.9 ACRES  
(SEE P.L. BK. 751 P. 122)

DEREK P. CLARK  
BK. 20786-10 (98-155)  
3.2 ACRES

NEW ENGLAND POWER CO.  
(BK. 3967-206)  
7.80 ACRES

NEW ENGLAND POWER CO.  
BK. 18168-255 (8/14/96)  
4.5 ACRES

NEW ENGLAND POWER COMPANY  
(BK. 3967-206)  
1.50 ACRES

NEW ENGLAND POWER CO.  
(BK. 3967-206)  
2,007 S.F.

PACE LIVING TRUST  
BK. 30379-122 (03-62)  
31,293 S.F.

KIMBERLY S. DUPREY  
BK. 34088-163 (04-92)  
37,729 S.F.

DAVID A. PROUTY  
BK. 18168-255 (96-91)  
1.43 ACRES

CATHERINE CLARK  
BK. 18784-158 (97-26)  
3.4 ACRES

KIM M. & STEPHEN F. AMES  
BK. 18724-156 (97-26)  
40,857 S.F.

BRUCE C. & AMY P. BAIRD  
BK. 10708-31 (87-86)  
2.57 ACRES

JEAN R. & SUSAN A. THERIAULT  
BK. 13457-323 (91-67)  
3.08 ACRES

PHILIP L. & DIANE M. HAMEL  
BK. 13738-312 (91-10)  
38,115 S.F.

PETER K. & ANITA THOMAS  
BK. 10917-2 (87-125)  
37,314 S.F.

WILLIAM R. & SHARON E. BRACKETT  
BK. 18120-283 (96-80)  
34,546 S.F.

EDDISON K. & JUNE R. RAMSARAN  
BK. 22939-339 (00-91)  
1.608 ACRES

GERARD T. & NANCY C. DONNELLY  
BK. 17959-103 (96-60)  
33,685 S.F.

PAUL B. & HELEN J. DEETER  
BK. 20331-77 (89-92)  
30,161 S.F.

JOHN A. & ANDREY T. DIFILATO  
BK. 5725-334 (75-34)  
1.124 ACRES

GREGORY A. & SUE A. PAUL  
BK. 8281-114 (84-75)  
30,300 S.F.

JOHN & CAROLINE W. STOFFEL  
BK. 21688-236 (97-92)  
30,182 S.F.

ROBERT & CAROL A. FODOLSKI  
BK. 10382-21 (87-22)  
2,046 ACRES

MICHAEL B. & RENEE MAHLER  
BK. 27261-17 (02-93)  
36,538 S.F.

LOUIS J. H. & LINDA L. BURKHARDT  
BK. 23905-69 (04-74)  
1.928 ACRES

GREGORY H. & SUZANNE L. BARSAMIAN  
(BK. 12757-315)  
1.064 ACRES

ROBERT SUZANNE BUSOLARI  
BK. 27447-351 (02-86)  
30,000 S.F.

RANDALL & CHERYL WAGNER  
BK. 30053-114 (03-46)  
1.19 ACRES

DAVID E. & ANNE G. BAUER  
BK. 21688-236 (97-92)  
30,161 S.F.

JOHN W. & ANN F. BURKHARDT  
(BK. 4914-551)  
3.49 ACRES  
(SEE P.L. BK. 327 P. 89)

(SEE PLAN BK. 74 PLAN 412)

(SEE P.L. BK. 751 P. 122)

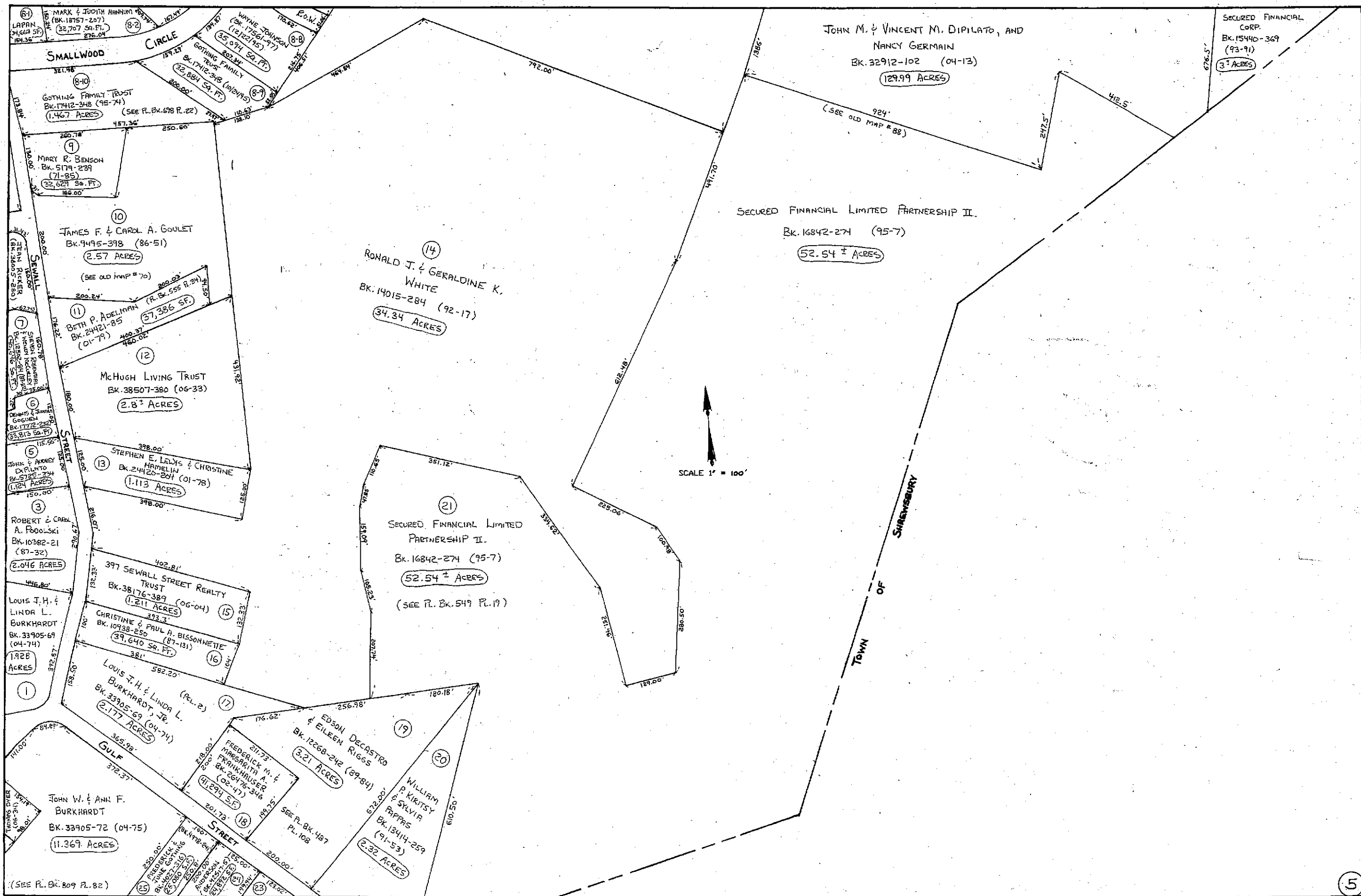
(SEE P.L. BK. 751 P. 122)

(SEE PLAN BK. 74 PLAN 412)

(SEE P.L. BK. 773 P. 25)

(SEE P.L. BK. 576 P. 124)

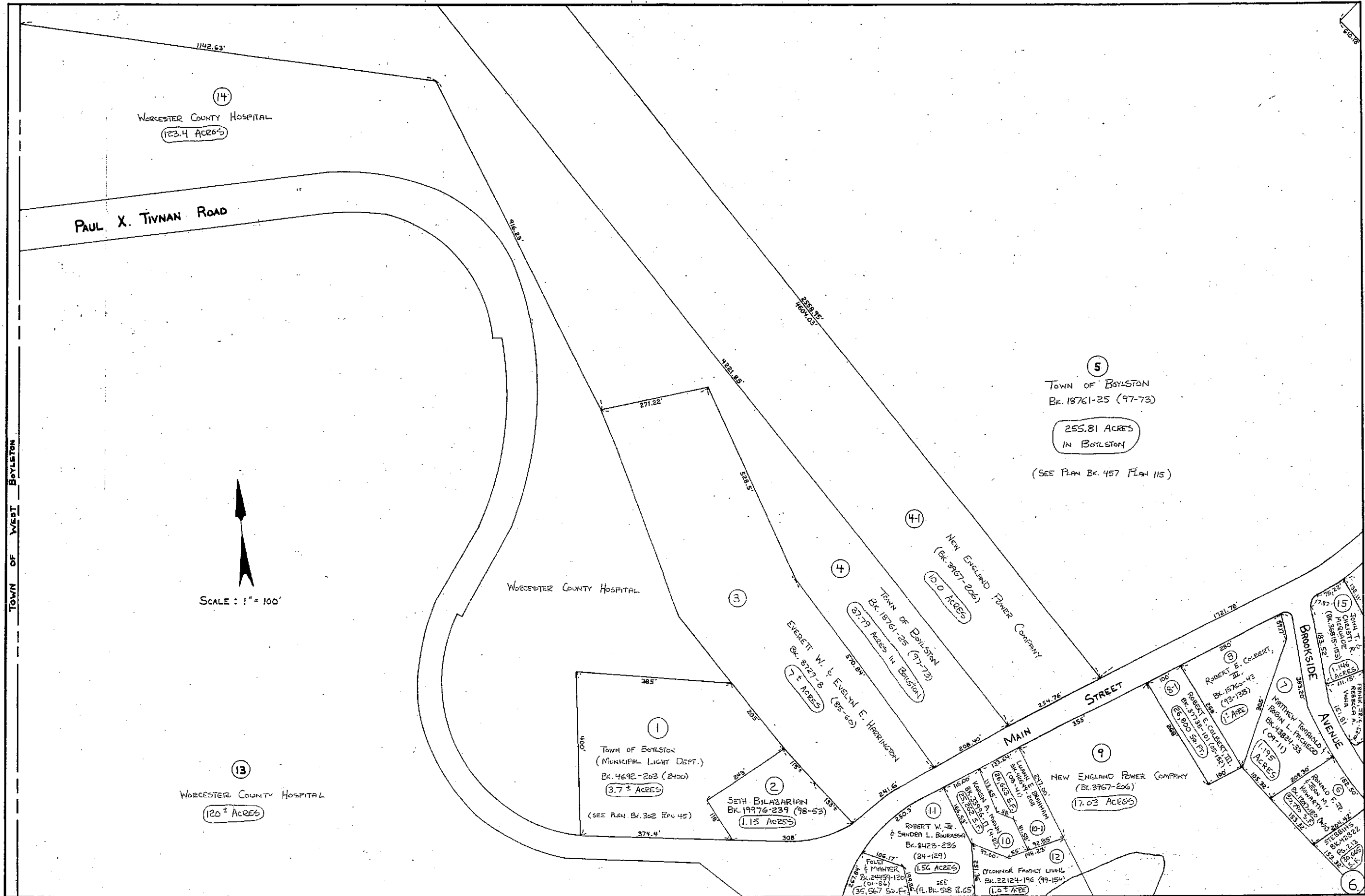
(SEE P.L. BK. 327 P. 89)



4

5

2A



14  
WORCESTER COUNTY HOSPITAL  
123.4 ACRES

PAUL X. TIVNAN ROAD



13  
WORCESTER COUNTY HOSPITAL  
120 ACRES

5  
TOWN OF BOYLSTON  
BK. 18761-25 (97-73)  
255.81 ACRES  
IN BOYLSTON  
(SEE PLAN BK. 457 PLAN 115)

WORCESTER COUNTY HOSPITAL

4-1  
NEW ENGLAND POWER COMPANY  
(BK. 3967-206)  
10.0 ACRES

4  
TOWN OF BOYLSTON  
BK. 18761-25 (97-73)  
67.79 ACRES IN BOYLSTON

3  
EVERETT W. & EVELYN E. HARRINGTON  
BK. 8727-8 (85-60)  
7 ACRES

1  
TOWN OF BOYLSTON  
(MUNICIPAL LIGHT DEPT.)  
BK. 4692-203 (2400)  
3.7 ACRES  
(SEE PLAN BK. 302 PLAN 45)

2  
SETH BILAZARIAN  
BK. 19976-239 (98-53)  
1.15 ACRES

9  
NEW ENGLAND POWER COMPANY  
(BK. 3967-206)  
17.03 ACRES

11  
ROBERT W. JR. & SANDRA L. BOURASSA  
BK. 8423-236 (84-129)  
1.56 ACRES

6-1  
ROBERT E. COLBERT, JR.  
BK. 5723-70 (65-187)  
65.00 SQ. FT.

7  
MATTHEW TOMARCO, JR.  
BK. 43821-53 (07-11)  
1.195 ACRES

15  
JOHN T. & CHARLOTTE M. MICHAELIS  
(BK. 505-151)  
1.14 ACRES

6  
FRANK S. & REBECCA A. GAY  
BK. 151-81  
1.14 ACRES

6  
RALPH F. JR.  
BK. 22710-52 (20710-52)  
1.14 ACRES

10-1  
LUCAS E. BANNUM  
BK. 108-41-168  
1.14 ACRES

10-2  
KAREN A. MANN  
BK. 23206-51 (83-51)  
1.14 ACRES

10-3  
DEONOR FAMILY LIVING  
BK. 22124-196 (99-154)  
1.0 ACRES

10-4  
ROBERT W. JR. & SANDRA L. BOURASSA  
BK. 8423-236 (84-129)  
1.56 ACRES

10-5  
FRANK S. & REBECCA A. GAY  
BK. 151-81  
1.14 ACRES

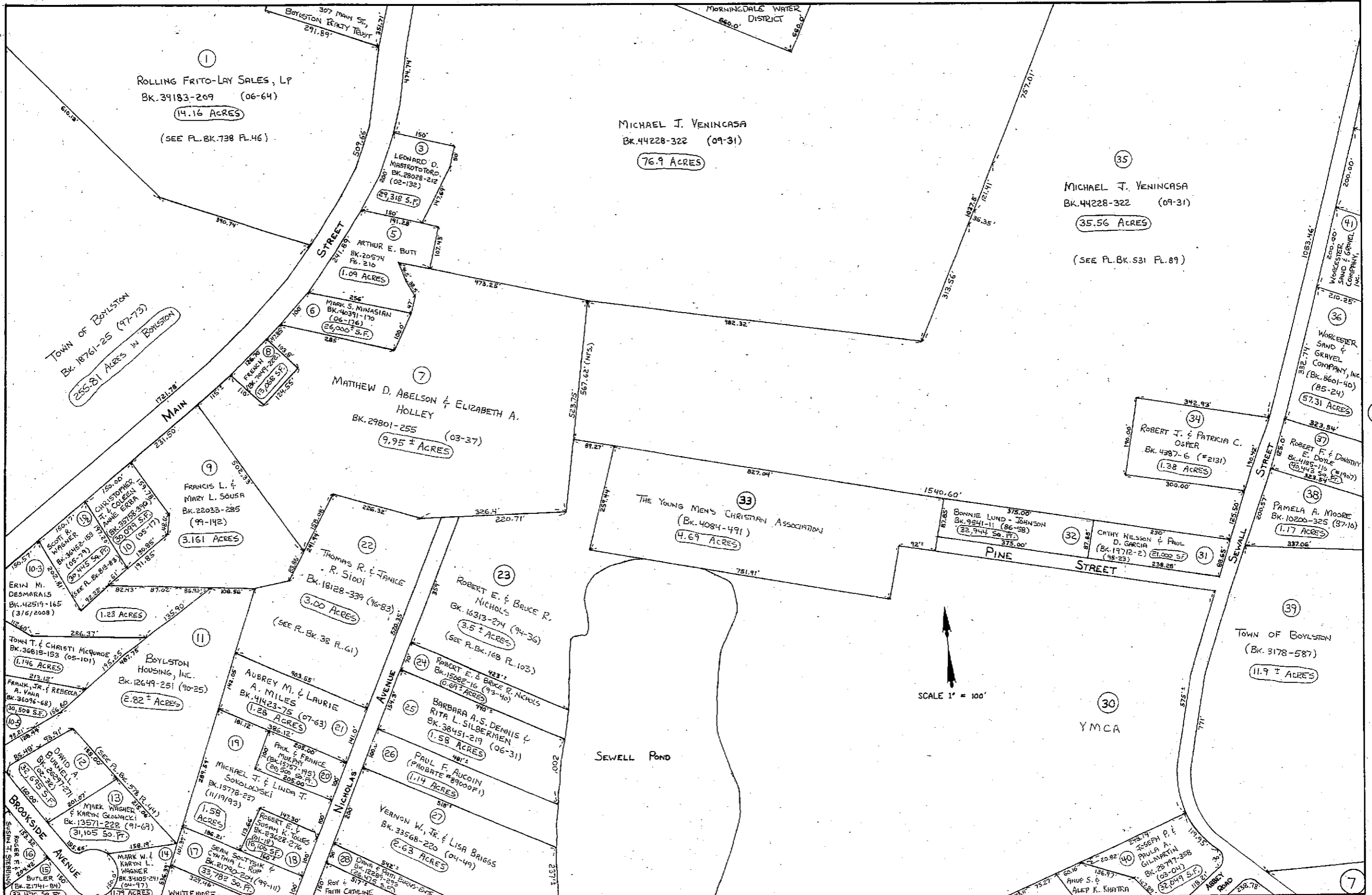
10-6  
RALPH F. JR.  
BK. 22710-52 (20710-52)  
1.14 ACRES

TOWN OF WEST BOYLSTON

10

7

3



1  
 ROLLING FRITO-LAY SALES, LP  
 BK. 39183-209 (06-64)  
 14.16 ACRES  
 (SEE PL. BK. 738 PL. 46)

MICHAEL J. VENINCASA  
 BK. 44228-322 (09-31)  
 76.9 ACRES

35  
 MICHAEL J. VENINCASA  
 BK. 44228-322 (09-31)  
 35.56 ACRES  
 (SEE PL. BK. 531 PL. 89)

7  
 MATTHEW D. ABELSON & ELIZABETH A. HOLLEY  
 BK. 29801-255 (03-37)  
 9.95 ± ACRES

33  
 THE YOUNG MEN'S CHRISTIAN ASSOCIATION  
 (BK. 4084-491)  
 4.69 ACRES

34  
 ROBERT J. & PATRICIA C. OSFER  
 BK. 4387-6 (#2131)  
 1.38 ACRES

9  
 FRANCIS L. & MARY L. SOUSA  
 BK. 22033-285 (99-142)  
 3.161 ACRES

22  
 THOMAS R. & JANICE R. SIODI  
 BK. 18128-339 (96-83)  
 3.00 ACRES  
 (SEE R. BK. 38 PL. 61)

23  
 ROBERT E. & BRUCE R. NICHOLS  
 BK. 16313-274 (94-36)  
 3.5 ± ACRES  
 (SEE PL. BK. 168 PL. 103)

32  
 BONNIE LUND - JOHNSON  
 BK. 9241-11 (86-58)  
 22,744 SQ. FT.

31  
 CATHY NILSSON & PAUL D. GARCIA  
 (BK. 19712-2) 21,000 SF  
 (98-23)

38  
 PAMELA A. MOORE  
 BK. 10200-325 (37-16)  
 1.17 ACRES

10-3  
 ERIN M. DESMARAIS  
 BK. 42519-165 (31/6/2008)  
 1.23 ACRES

11  
 BOYLSTON HOUSING, INC.  
 BK. 12649-251 (90-25)  
 2.82 ± ACRES

19  
 AUBREY M. & LAURIE A. MILES  
 BK. 41423-75 (07-63)  
 1.28 ACRES

24  
 ROBERT E. & BRUCE R. NICHOLS  
 BK. 15882-16 (93-40)  
 0.81 ± ACRES

25  
 BARBARA A.S. DENNIS & RITA L. SILBERNIEN  
 BK. 38451-219 (06-31)  
 1.58 ACRES

26  
 PAUL F. AUCCIN (PROBATE #89000F1)  
 1.14 ACRES

27  
 VERNON W., JR. & LISA BRIGGS  
 BK. 33568-220 (04-49)  
 2.63 ACRES

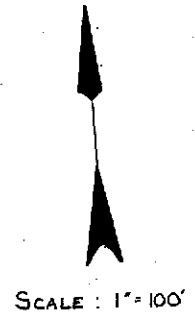
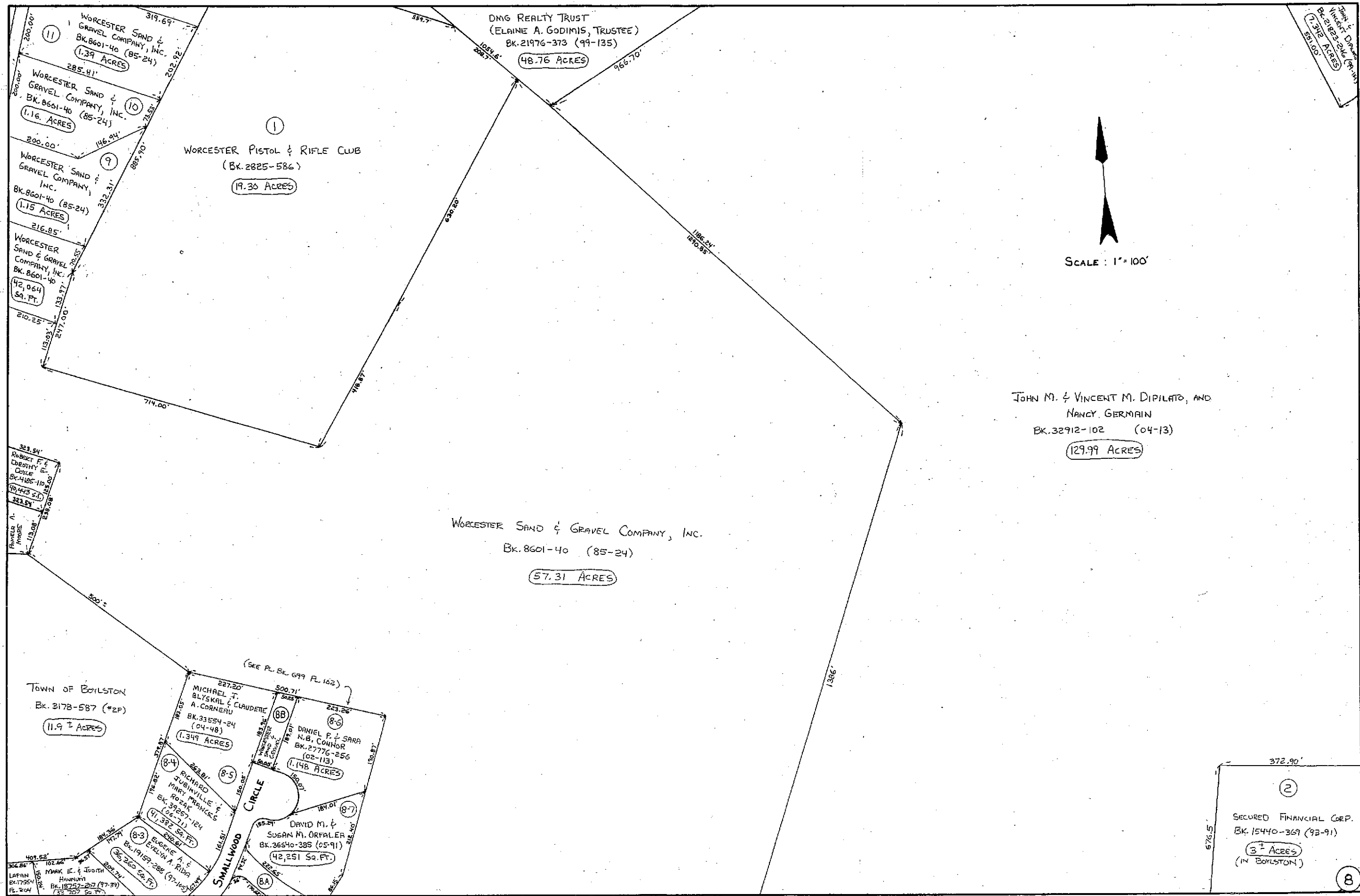
13  
 MARK W. & KARYN L. WAGNER  
 BK. 13571-228 (91-69)  
 31,105 SQ. FT.

17  
 SEAN SOLTYSIK & YATHIRA L. ROP  
 BK. 21790-204 (99-11)  
 33,782 SQ. FT.

18  
 ROBERT E. & SUSAN K. TOWLES  
 BK. 23628-276 (01-18)  
 15,105 SQ. FT.

40  
 JOSEPH P. & PAULA A. GILMARTIN  
 BK. 28747-258 (03-04)  
 32,049 SQ. FT.

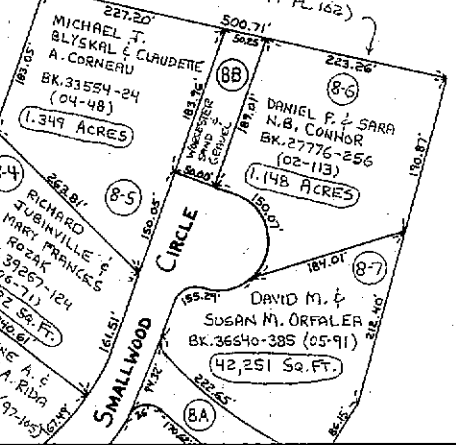
12



JOHN M. & VINCENT M. DIPILATO, AND  
 NANCY GERMAIN  
 Bk. 32912-102 (04-13)  
 129.99 ACRES

WORCESTER SAND & GRAVEL COMPANY, INC.  
 Bk. 8601-40 (85-24)  
 57.31 ACRES

TOWN OF BOYLSTON  
 Bk. 2178-587 (#2P)  
 11.9 ACRES



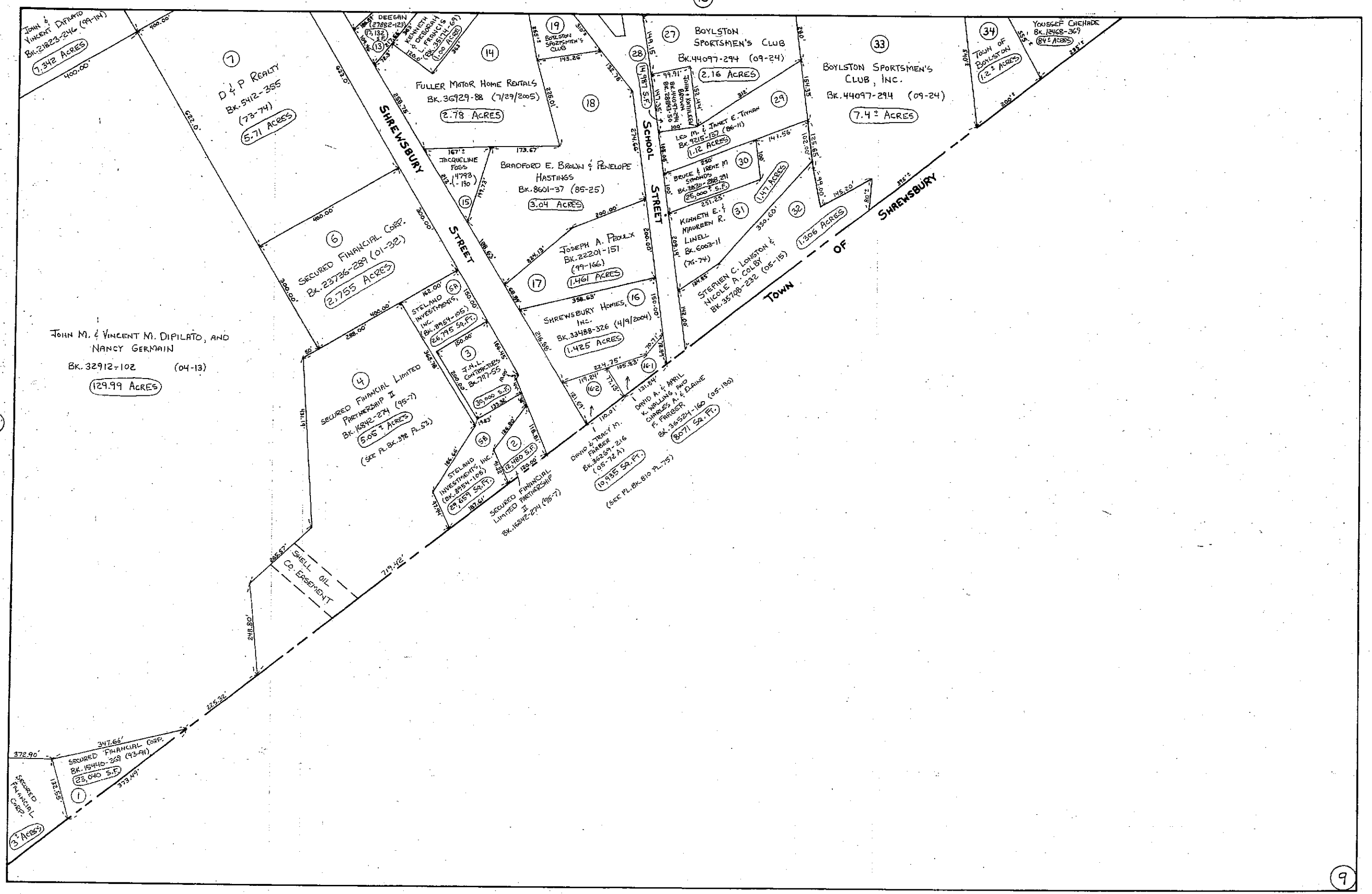
372.90'  
 676.5'  
 2  
 SECURED FINANCIAL CORP.  
 Bk. 15440-369 (93-91)  
 3.7 ACRES  
 (IN BOYLSTON)

7

9

5

8



15

COMMONWEALTH OF MASSACHUSETTS  
METROPOLITAN DISTRICT COMMISSION  
(Bk. 17071-27) (MAY 4, 1995)

88.35 ACRES IN BOYLSTON

METROPOLITAN DISTRICT  
COMMISSION

240.00'

267.03'

348.81'

1833.58'

TOWN OF BOYLSTON

Bk. 18761-25 (97-73)

255.81 ACRES IN BOYLSTON



SCALE: 1" = 100'

TOWN OF WEST BOYLSTON

2228.71'

416.65'

1712.35'

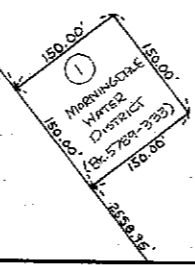
NEW ENGLAND POWER COMPANY  
(Bk. 2515-536)

1825.08'  
4607.03'

4221.85'

TOWN OF BOYLSTON  
Bk. 18761-25 (97-73)

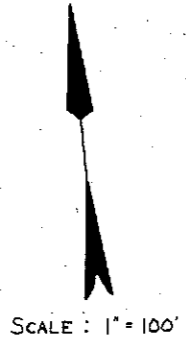
37.79 ACRES



6

11

10



TOWN OF BOYLSTON  
Bk. 18761-25 (97-73)  
**255.81 ACRES**

8  
MICHAEL J. VENINCASA  
Bk. 44228-322 (09-31)  
**76.9 ACRES**

16  
ELLSMERE ASSOCIATES, LLC. (SEE P.L. BK. 317 P. 54)  
Bk. 40461-358 (07-03)  
**7.09 ACRES**

4  
ME REALTY, LLC.  
Bk. 41022-330 (07-40)  
**3.85 ACRES**  
(SEE P.L. BK. 855 P. 116)

7  
PLATINUM @ SHREWSBURY LLC  
(LC. Doc. # 76798) (02-49)  
**12.0 ACRES**

6  
BUTLER-DEARDEN PAPER  
SERVICE, INC.  
Bk. 16975-32 (95-18)  
**3.148 ACRES**  
(SEE OLD MAP # 16)

TOWN OF BOYLSTON (Bk. 4478-509) **1.3 ACRES**

TOWN OF BOYLSTON  
ELEMENTARY SCHOOL  
Bk. 3589-137 (5/21/54)  
**17.3 ± ACRES**

2-1  
SHAMROCK REALTY GROUP, LLC  
Bk. 36688-194 (05-94)  
**15.579 ACRES**

2  
SHAMROCK REALTY GROUP, LLC  
Bk. 39137-4 (08-60)  
**3.008 ACRES**  
(SEE P.L. BK. 824 P. 21)

ROLLING FRITO-LAY SALES, LP  
Bk. 39183-209 (06-64)  
**14.16 ACRES**

1  
307 MAIN ST.,  
BOYLSTON REALTY  
TRUST  
(JOHN WEIGHT, TRUSTEE)  
Bk. 22852-310 (00-83)  
**2.13 ACRES**

9  
HAROLD E. & JOAN T.  
HODGE & BARBARA C.  
TRAYER  
Bk. 5093-378 (71-6)  
**1.24 ACRES**

BOYLSTON &  
MORNINGDALE  
WATER DISTRICT  
Bk. 22665-39 (00-69)  
**40.715 S.F.**

10  
MICHAEL J. VENINCASA  
Bk. 44228-322 (09-31)  
**76.9 ACRES**

11  
MORNINGDALE WATER DISTRICT  
**10 ACRES**

ROBERT F. & DOROTHY E. DOYLE  
Bk. 4481-125 (7/13/64)  
**2.30 ACRES**

ROBERT F. & DOROTHY E.  
DOYLE  
Bk. 16446-139 (94-57)  
**2.07 ACRES**

Bk. 44228-322  
(09-31)  
**35.56 ACRES**

KEITH D. MOORADIAN  
Bk. 18173-161 (96-93)  
**2 ± ACRES**

MICHAEL J. VENINCASA

STREET  
MAIN STREET

SHREWSBURY STREET

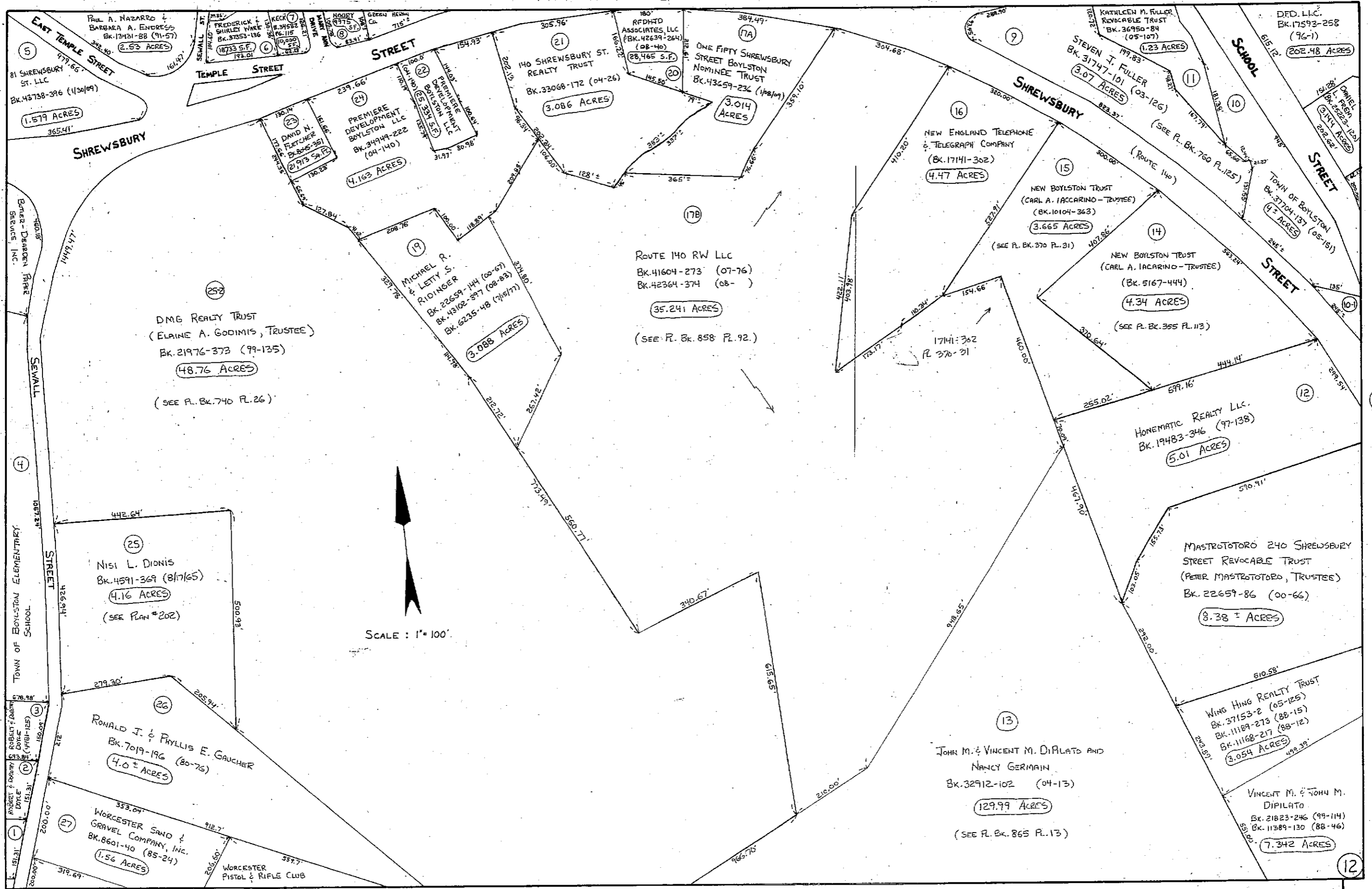
STREET

BI SHREWSBURY ST. LLC

10

12

7



SCALE: 1" = 100'