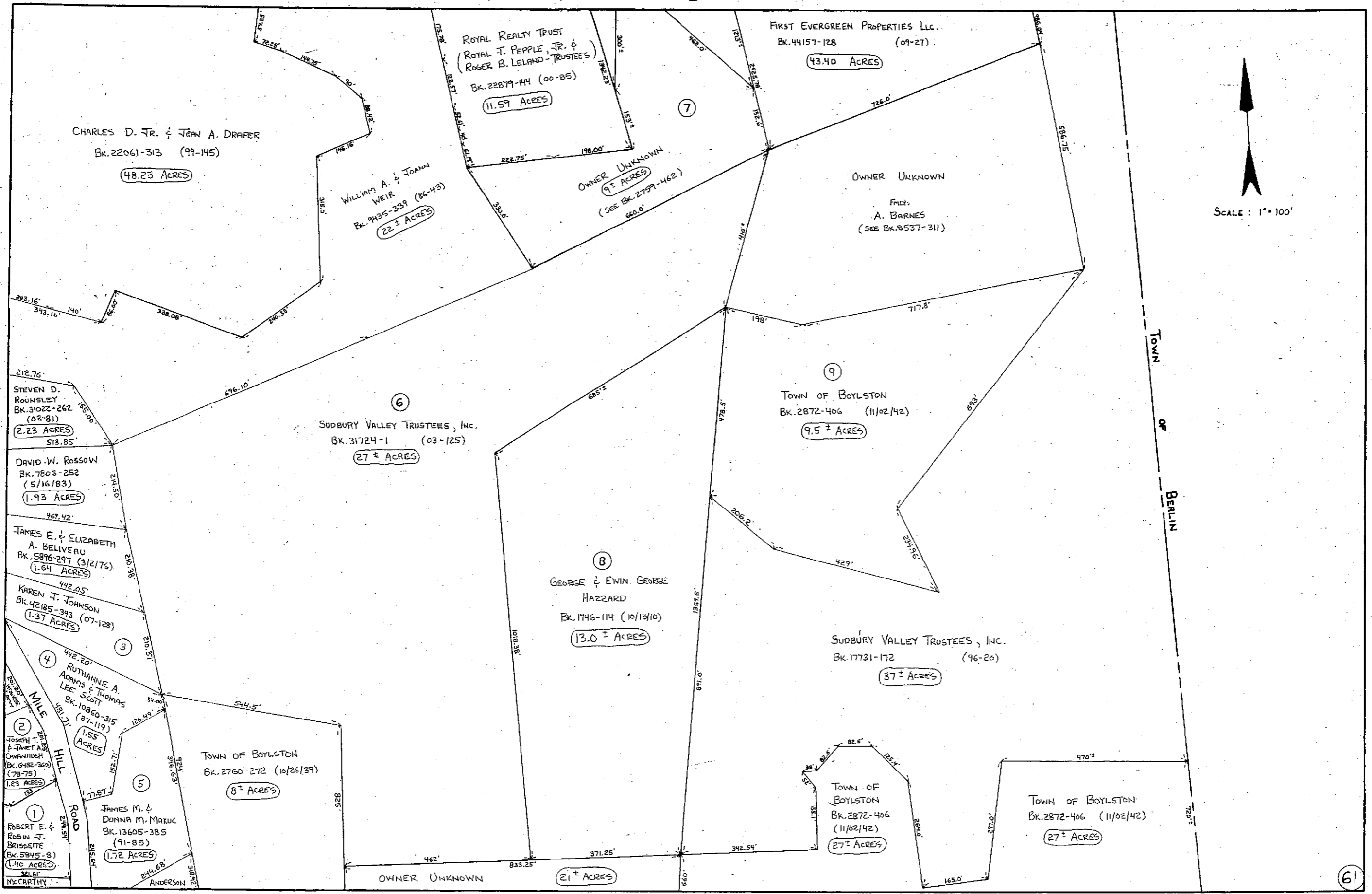


65



SCALE: 1" = 100'

60

61

56



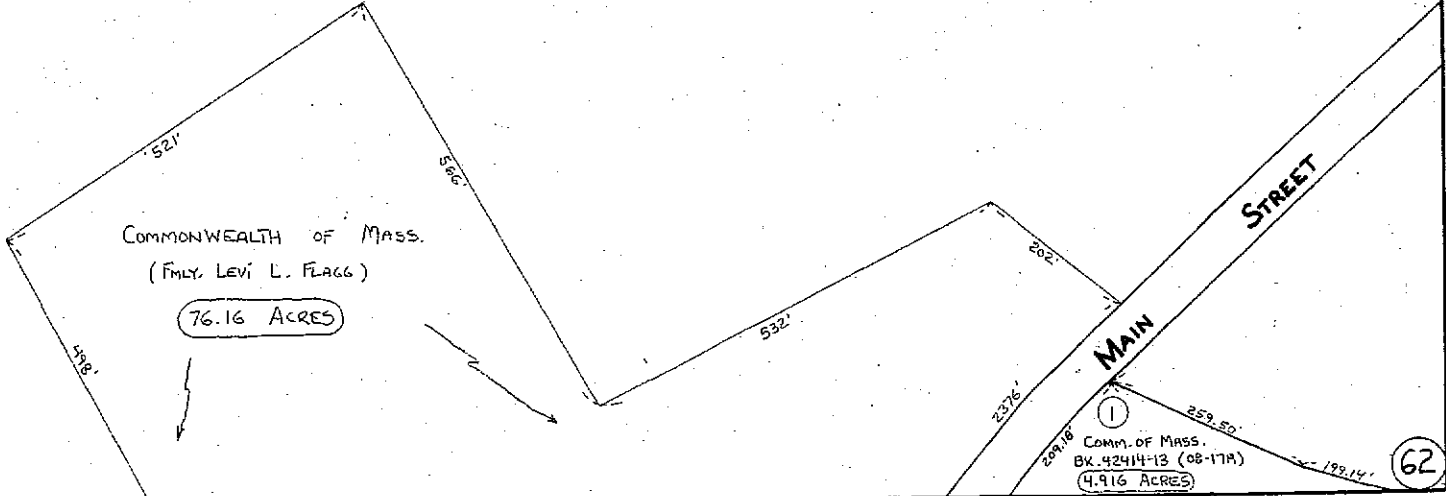
COMMONWEALTH OF MASSACHUSETTS

COMMONWEALTH OF MASS.
(Fmly LEVI L. FLAGG)
76.16 ACRES

MAIN STREET

1
COMM. OF MASS.
BX. 42414-13 (08-17A)
4.916 ACRES

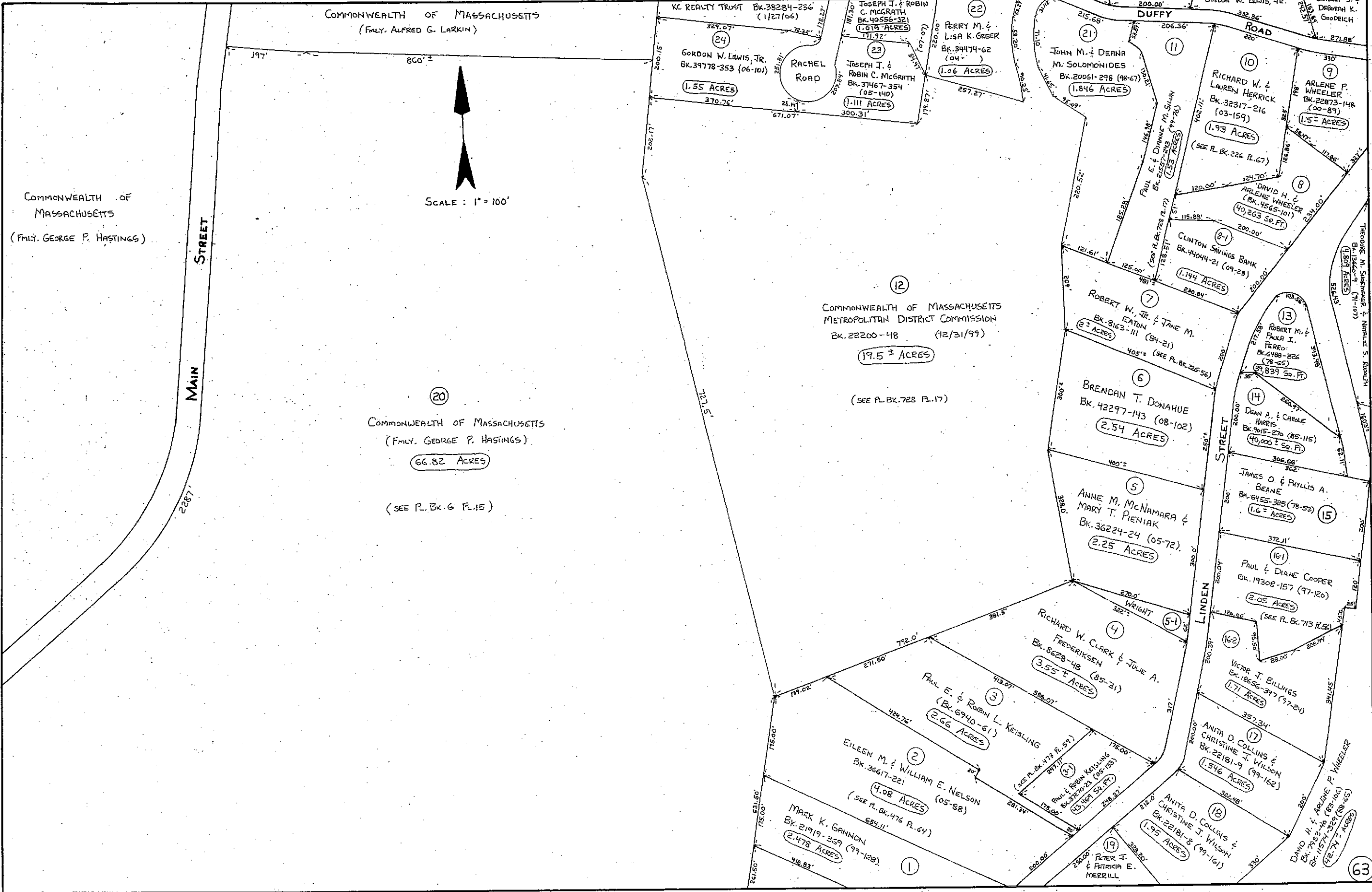
687'
515'
836'
COMMONWEALTH OF MASSACHUSETTS



63

58

62



COMMONWEALTH OF MASSACHUSETTS
(Fmly. GEORGE P. HASTINGS)

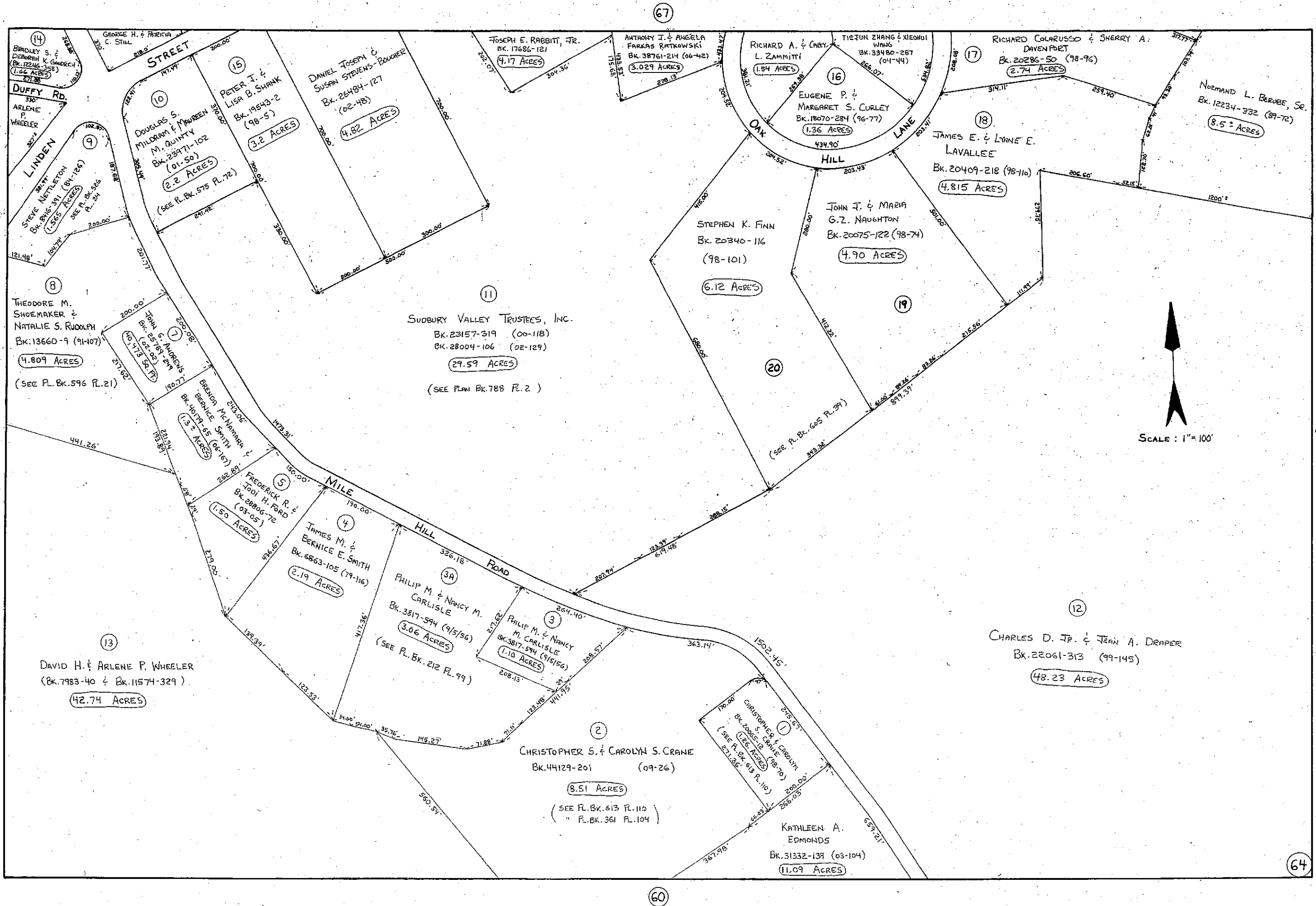
COMMONWEALTH OF MASSACHUSETTS
(Fmly. ALFRED G. LARKIN)

SCALE: 1" = 100'

20
COMMONWEALTH OF MASSACHUSETTS
(Fmly. GEORGE P. HASTINGS)
66.82 ACRES
(SEE P.L. BK. 6 P.L. 15)

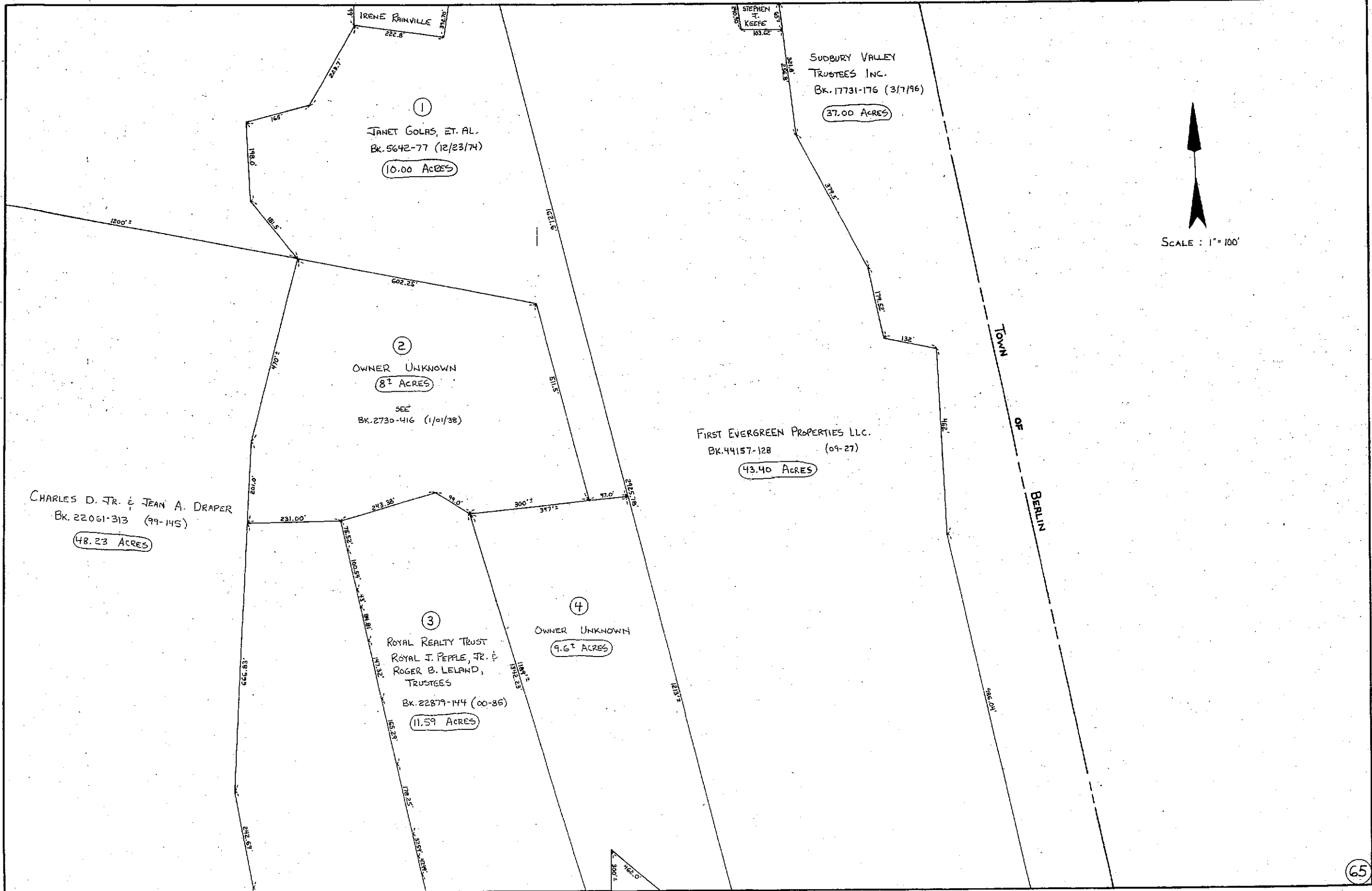
12
COMMONWEALTH OF MASSACHUSETTS
METROPOLITAN DISTRICT COMMISSION
BK. 22200-48 (12/31/99)
19.5 ± ACRES
(SEE P.L. BK. 728 P.L. 17)

- 1. MARK K. GANNON BK. 21919-359 (99-128) 2.478 ACRES
- 2. EILEEN M. & WILLIAM E. NELSON BK. 36617-221 (05-88) 4.08 ACRES
- 3. PAUL E. & ROBIN L. KEISLING BK. 6940-61 (85-31) 2.66 ACRES
- 4. RICHARD W. CLARK & JULIE A. FREDERIKSEN BK. 8628-48 (85-31) 3.55 ± ACRES
- 5. ANNE M. McNAMARA & MARY T. PIENIAK BK. 36224-24 (05-72) 2.25 ACRES
- 6. BRENDAN T. DONAHUE BK. 42297-143 (08-102) 2.54 ACRES
- 7. ROBERT W. JR. & JANE M. EATON BK. 8162-111 (84-21) 2 ± ACRES
- 8. CLINTON SAVINGS BANK BK. 44044-21 (09-23) 1.144 ACRES
- 9. ARLENE P. WHEELER BK. 22873-148 (00-87) 1.5 ± ACRES
- 10. RICHARD W. & LAUREN HERRICK BK. 32317-216 (03-159) 1.93 ACRES
- 11. JOHN M. & DEANA M. SOLOMONIDES BK. 20051-298 (98-67) 1.846 ACRES
- 12. COMMONWEALTH OF MASSACHUSETTS METROPOLITAN DISTRICT COMMISSION BK. 22200-48 (12/31/99) 19.5 ± ACRES
- 13. ROBERT M. & PAULA I. PEARO BK. 6498-206 (78-65) 2.837 ± ACRES
- 14. DEAN A. & CHARLE HARRIS BK. 7015-270 (85-115) 40,000 ± SQ. FT.
- 15. JAMES O. & PHYLLIS A. BEANE BK. 6455-385 (78-57) 1.6 ± ACRES
- 16. PAUL & DIANE COOPER BK. 19308-157 (97-120) 2.05 ACRES
- 17. ANITA D. COLLINS & CHRISTINE J. WILSON BK. 22181-9 (99-162) 1.546 ACRES
- 18. ANITA D. COLLINS & CHRISTINE J. WILSON BK. 22181-8 (99-161) 1.95 ACRES
- 19. PETER J. & PATRICIA E. MERRILL BK. 21157-329 (88-85) 2.74 ± ACRES
- 20. COMMONWEALTH OF MASSACHUSETTS (Fmly. GEORGE P. HASTINGS) 66.82 ACRES
- 21. JOHN M. & DEANA M. SOLOMONIDES BK. 20051-298 (98-67) 1.846 ACRES
- 22. PERRY M. & LISA K. GREER BK. 34474-62 (04-) 1.06 ACRES
- 23. JOSEPH J. & ROBIN C. McGRATH BK. 37467-354 (05-140) 1.111 ACRES
- 24. GORDON W. LEWIS, JR. BK. 39778-353 (06-101) 1.55 ACRES



SCALE: 1" = 100'

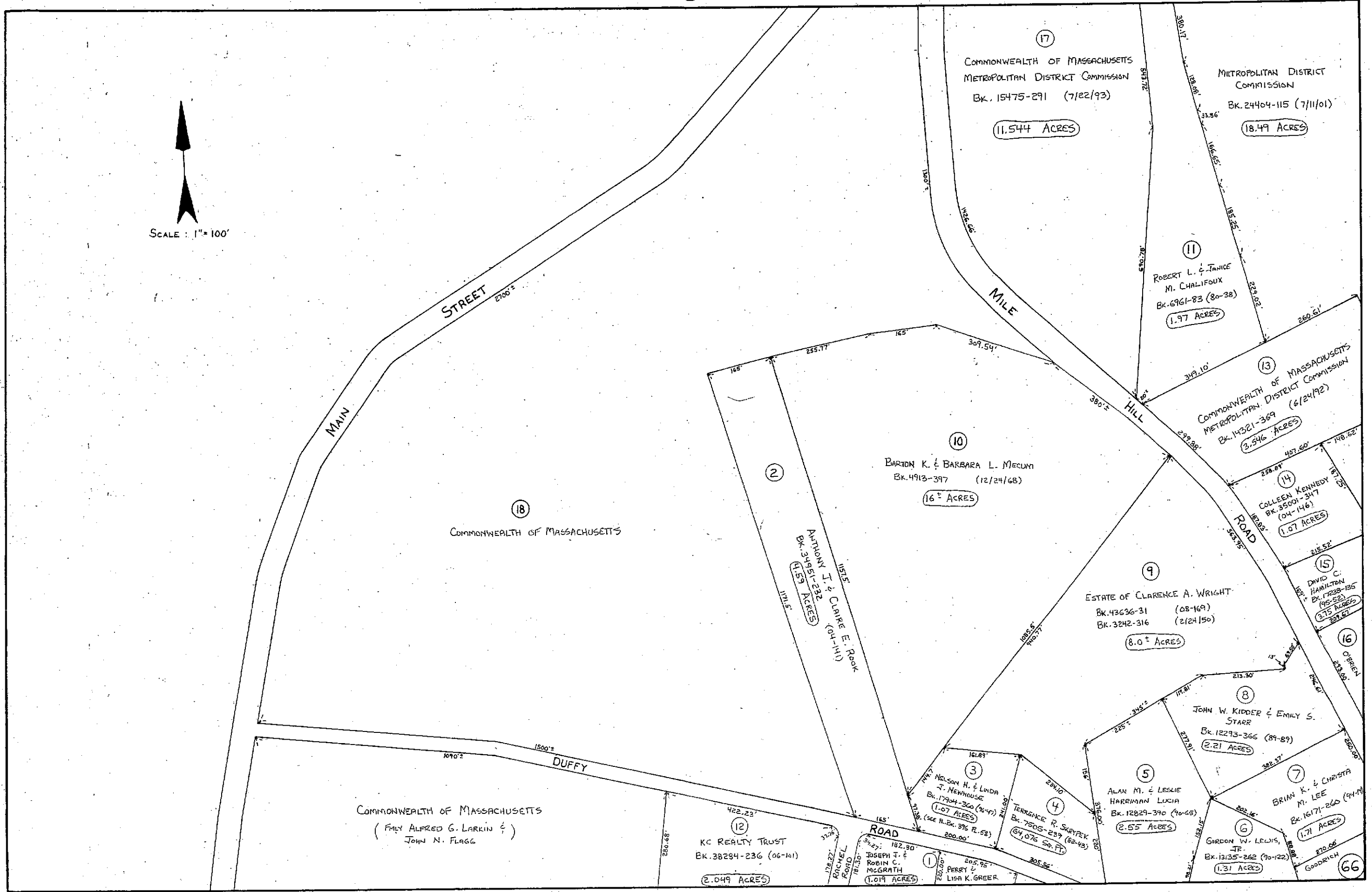
68

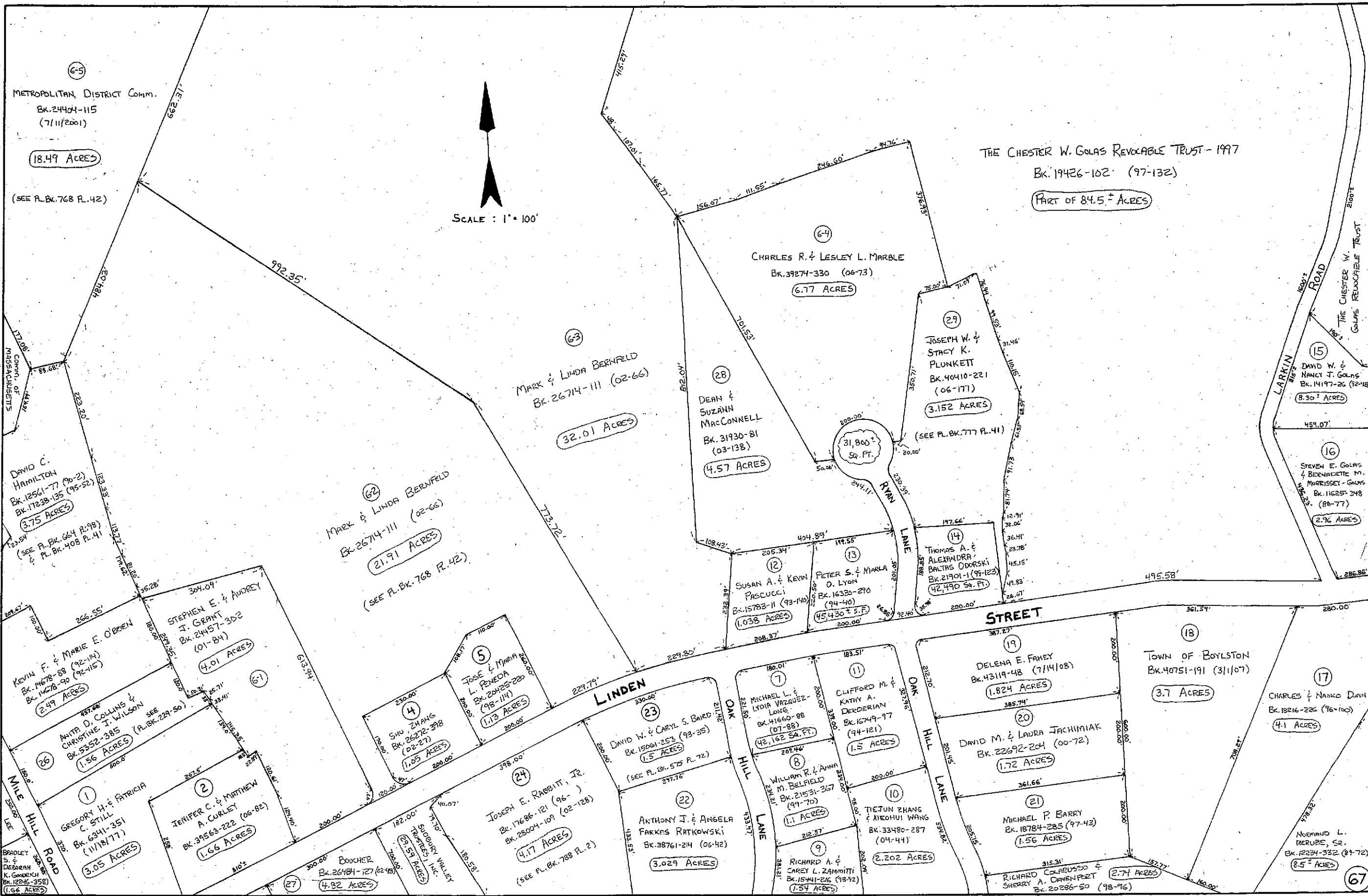


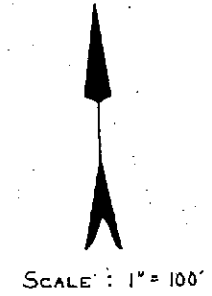
64

61

65







THE CHESTER W. GOLAS REVOCABLE TRUST-1997
CHESTER W. GOLAS-TRUSTEE
BK. 19426-102 (97-132)

84.5 ± ACRES

DAVID W. & NANCY J. GOLAS
BK. 14197-26 (92-48)

8.30 ± ACRES

RAYMOND J. & IRENE RAINVILLE
(BK. 2904-582)

10.82 ACRES

STEVEN E. GOLAS &
BERNADETTE M.
MORRISSEY - GOLAS
BK. 11625-246 (88-77)

2.96 ACRES

KIRIT C. &
JANET M. GOLAS-
SHAH
BK. 43830-92 (91-12)

34,636 S.F.

KIRIT C. & JANET M.
GOLAS-SHAH
BK. 43755-257 (09-06)

41,347 S.F.

LINDEN

ROBERT T. POWERS
BK. 8537-311 (85-10)

1.628 ACRES

CRAIG S. MAY
BK. 43370-279 (08-109)

1.081 ACRES

NORMAND L. BERUBE, SR.
BK. 12234-232 (87-72)

8.5 ± ACRES

IRENE RAINVILLE
(LIFE ESTATE)
BK. 16224-35 (74-27)

4.44 ACRES

STEPHEN J.
KEEFE
BK. 23459-295
(01-09)

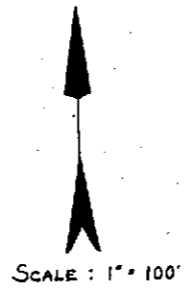
1.75 ACRES

FIRST EVERGREEN PROPERTIES LLC.
BK. 44157-128 (09-27)

43.40 ACRES

SUDBURY
VALLEY TRUSTEES
INC.
(BK. 17731-176)

37.00 ACRES



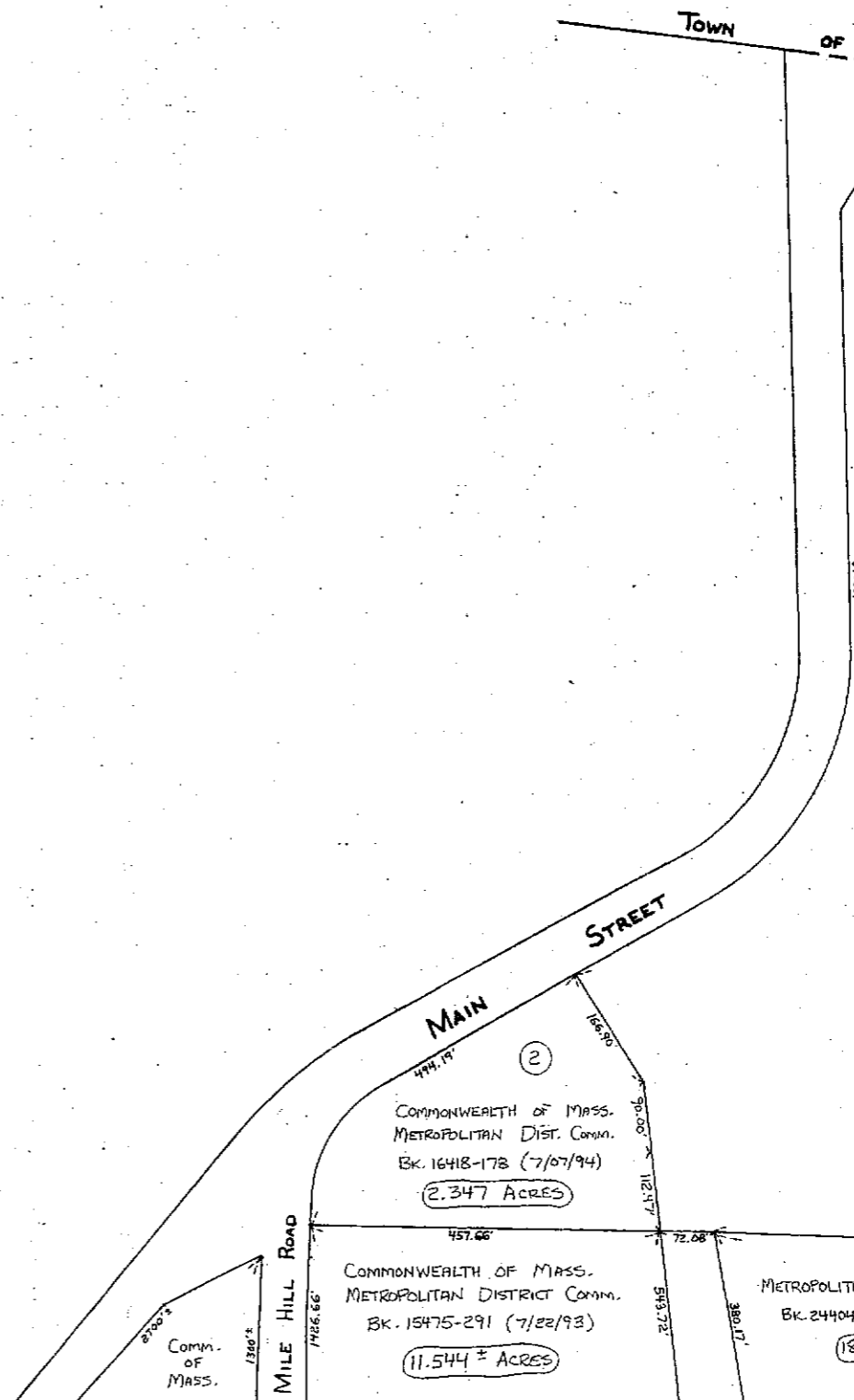
Town OF CLINTON

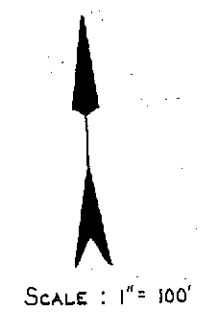
①
COMMONWEALTH OF MASS.
METROPOLITAN WATER WORKS
Bk. 1846-128 (12/21/06)
51.43 ACRES

②
COMMONWEALTH OF MASS.
METROPOLITAN DIST. COMM.
Bk. 16418-178 (7/07/94)
2.347 ACRES

COMMONWEALTH OF MASS.
METROPOLITAN DISTRICT COMM.
Bk. 15475-291 (7/22/93)
11.544 ACRES

METROPOLITAN DISTRICT COMMISSION
Bk. 24404-115 (7/11/01)
18.49 ACRES





Town
OF
CLINTON
BERLIN

Town
OF
CLINTON

Town
OF
BERLIN

COMMONWEALTH OF MASSACHUSETTS
METROPOLITAN WATER WORKS
Bk. 1846-128 (12/21/04)
51.43 ACRES

①
DANILO & MARIA ELIZABETH SICHON
Bk. 41187-390 (07-44 A)
4 ± ACRES
(SEE PL. BK. 795 P. 22)

③
THE D.J. COLDWELL
TRUST No. 2
Bk. 33350-337
(04-)
1.88 ACRES

THE CHESTER W. GOLAS REVOCABLE TRUST - 1997
Bk. 19426-102 (97-132)
81.5 ± ACRES

②
THE CHESTER W. GOLAS REVOCABLE TRUST - 1997
CHESTER W. GOLAS - TRUSTEE
Bk. 19426-102 (97-132)
84.5 ± ACRES

1101.56'
METROPOLITAN DISTRICT COMMISSION
Bk. 24404-115 (7/11/01)
18.49 ACRES

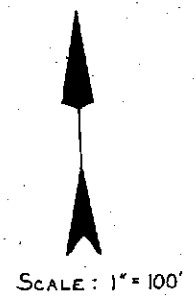
MARK & LINDA BERNFELD
Bk. 26714-111 (02-66)
32.01 ACRES

69

71

70

67



70

THE D.T. COLDWELL TRUST NO. 2 BK. 33350-337 (04-) (1.88 ACRES)

TOWN OF BERLIN

THE CHESTER W. GOLAS REVOCABLE TRUST - 1997
CHESTER W. GOLAS - TRUSTEE
BK. 19426-102 (97-132)

84.5 ± ACRES

①

THE CHESTER W. GOLAS REVOCABLE TRUST - 1997
CHESTER W. GOLAS - TRUSTEE
BK. 19426-102 (97-132)

24.5 ACRES

②

JOHN & MARILEA NIEDZIALKOSKY
(BK. 2756-441)

10.83 ACRES

TOWN OF BERLIN

239.85

68

71