


Source: Data provided by the Central Massachusetts Regional Planning Commission (CMRPC), massDOT and the Office of Geographic Information (MassGIS), Commonwealth of Massachusetts, Information Technology Division.

Information depicted on this map is for planning purposes only. This information is not adequate for legal boundary definition, regulatory interpretation, or parcel-level analysis. Use caution interpreting positional accuracy.

Produced by


Central Massachusetts Regional Planning Commission

2 Washington Square, Union Station Worcester, MA 01604

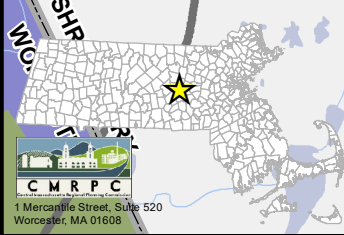
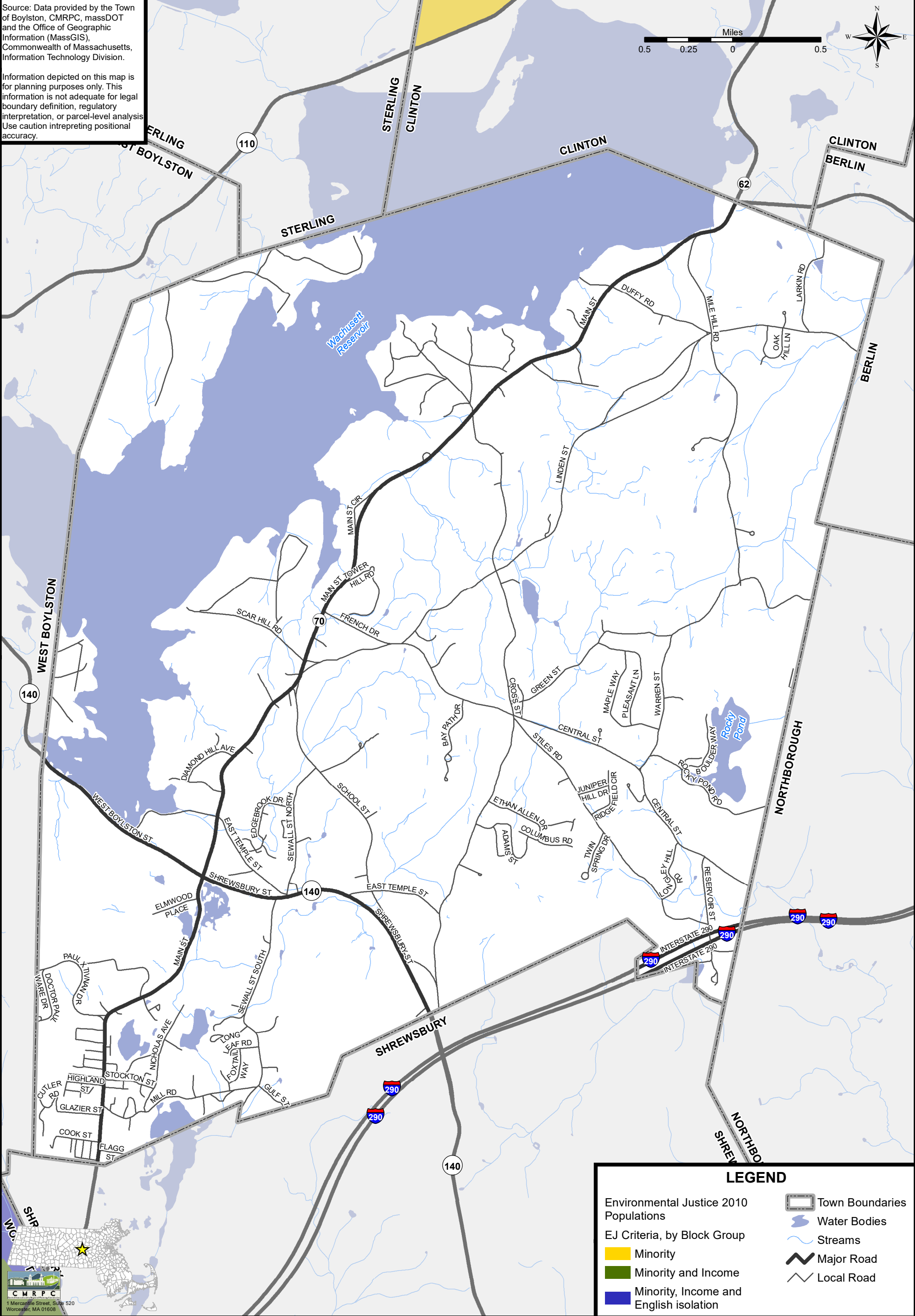
Date: 4/28/2017 Path: H:\Projects\IO_Boylston_GIS\m039_Locus_11x17.mxd

ENVIRONMENTAL JUSTICE MAP

OPEN SPACE AND RECREATION PLAN

Source: Data provided by the Town of Boylston, CMRPC, massDOT and the Office of Geographic Information (MassGIS), Commonwealth of Massachusetts, Information Technology Division.

Information depicted on this map is for planning purposes only. This information is not adequate for legal boundary definition, regulatory interpretation, or parcel-level analysis. Use caution interpreting positional accuracy.



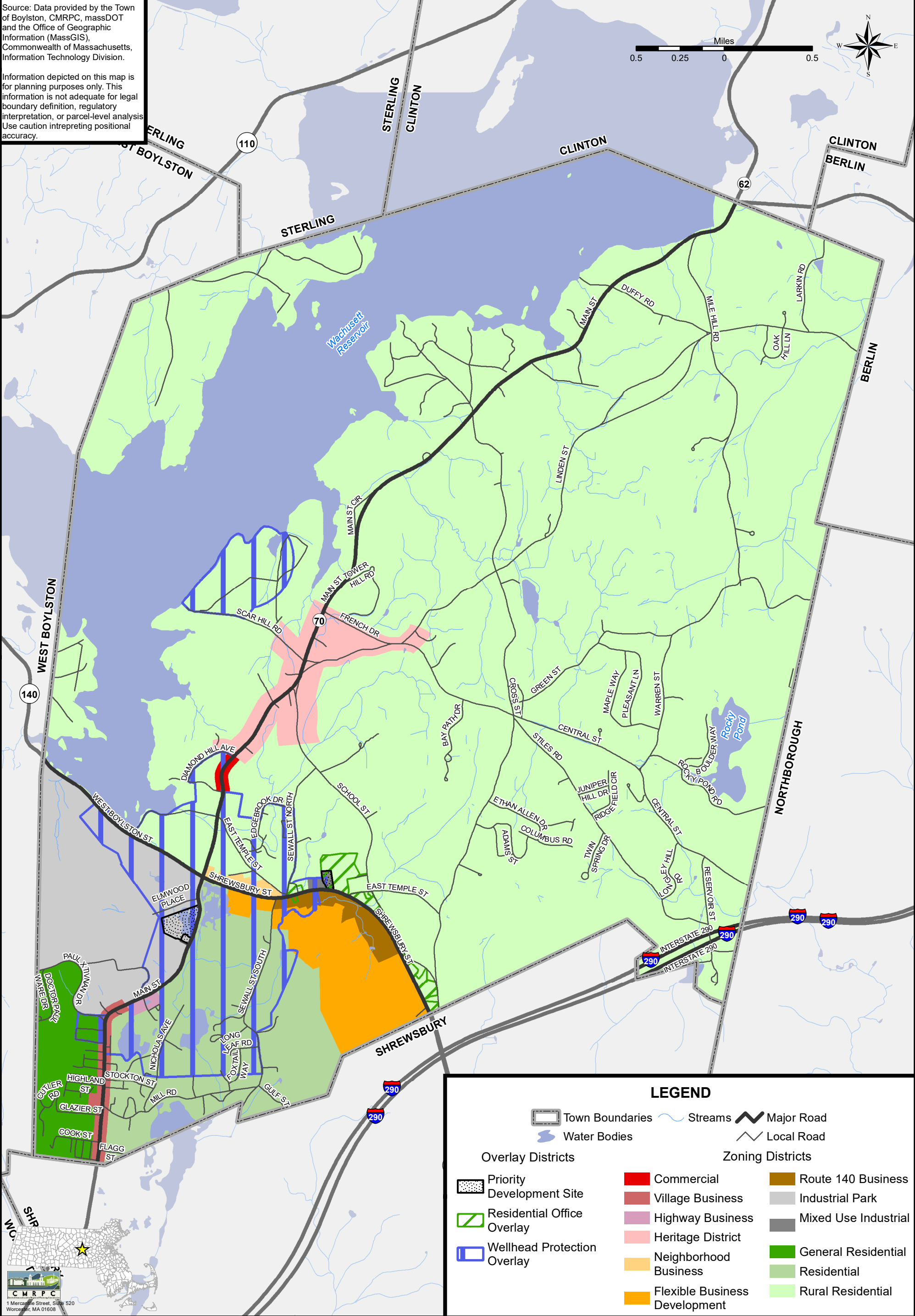
Town of Boylston, Massachusetts

ZONING DISTRICTS & OVERLAYS

OPEN SPACE AND RECREATION PLAN

Source: Data provided by the Town of Boylston, CMRPC, massDOT and the Office of Geographic Information (MassGIS), Commonwealth of Massachusetts, Information Technology Division.

Information depicted on this map is for planning purposes only. This information is not adequate for legal boundary definition, regulatory interpretation, or parcel-level analysis. Use caution interpreting positional accuracy.



Town of Boylston, Massachusetts

SOILS & GEOLOGIC FEATURES

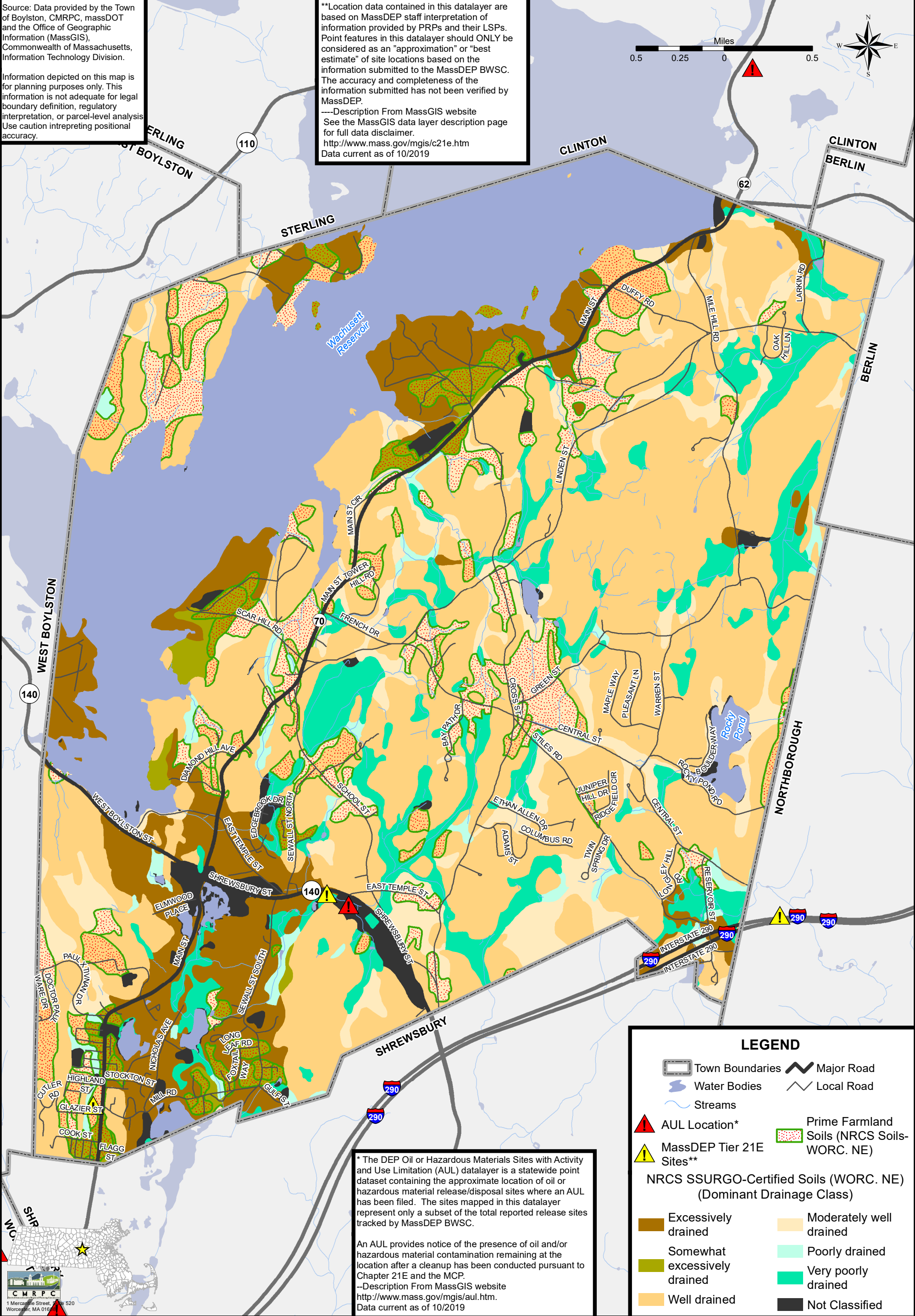
OPEN SPACE AND RECREATION PLAN

Source: Data provided by the Town of Boylston, CMRPC, massDOT and the Office of Geographic Information (MassGIS), Commonwealth of Massachusetts, Information Technology Division.

Information depicted on this map is for planning purposes only. This information is not adequate for legal boundary definition, regulatory interpretation, or parcel-level analysis. Use caution interpreting positional accuracy.

**Location data contained in this datalayer are based on MassDEP staff interpretation of information provided by PRPs and their LSPs. Point features in this datalayer should ONLY be considered as an "approximation" or "best estimate" of site locations based on the information submitted to the MassDEP BWSC. The accuracy and completeness of the information submitted has not been verified by MassDEP.

----Description From MassGIS website
See the MassGIS data layer description page for full data disclaimer.
<http://www.mass.gov/mgis/c21e.htm>
Data current as of 10/2019



* The DEP Oil or Hazardous Materials Sites with Activity and Use Limitation (AUL) datalayer is a statewide point dataset containing the approximate location of oil or hazardous material release/disposal sites where an AUL has been filed. The sites mapped in this datalayer represent only a subset of the total reported release sites tracked by MassDEP BWSC.

An AUL provides notice of the presence of oil and/or hazardous material contamination remaining at the location after a cleanup has been conducted pursuant to Chapter 21E and the MCP.

---Description From MassGIS website
<http://www.mass.gov/mgis/aul.htm>
Data current as of 10/2019

LEGEND

Town Boundaries

Major Road

Water Bodies

Local Road

Streams

AUL Location*

MassDEP Tier 21E Sites**

Prime Farmland Soils (NRCS Soils-WORC. NE)

NRCS SSURGO-Certified Soils (WORC. NE) (Dominant Drainage Class)

Excessively drained

Somewhat excessively drained

Well drained

Moderately well drained

Poorly drained

Very poorly drained

Not Classified

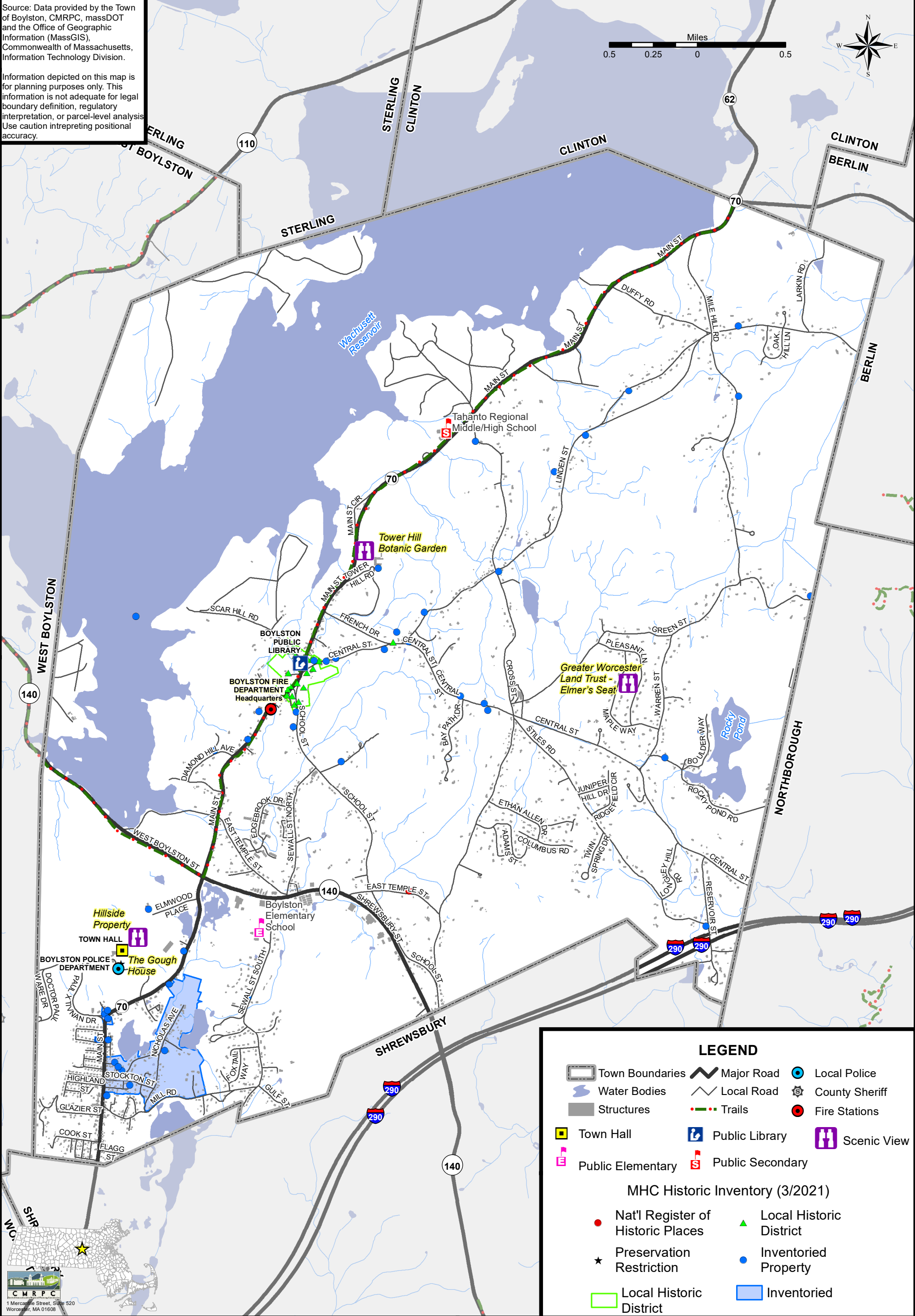
Town of Boylston, Massachusetts

UNIQUE FEATURES

OPEN SPACE AND RECREATION PLAN

Source: Data provided by the Town of Boylston, CMRPC, massDOT and the Office of Geographic Information (MassGIS), Commonwealth of Massachusetts, Information Technology Division.

Information depicted on this map is for planning purposes only. This information is not adequate for legal boundary definition, regulatory interpretation, or parcel-level analysis. Use caution interpreting positional accuracy.



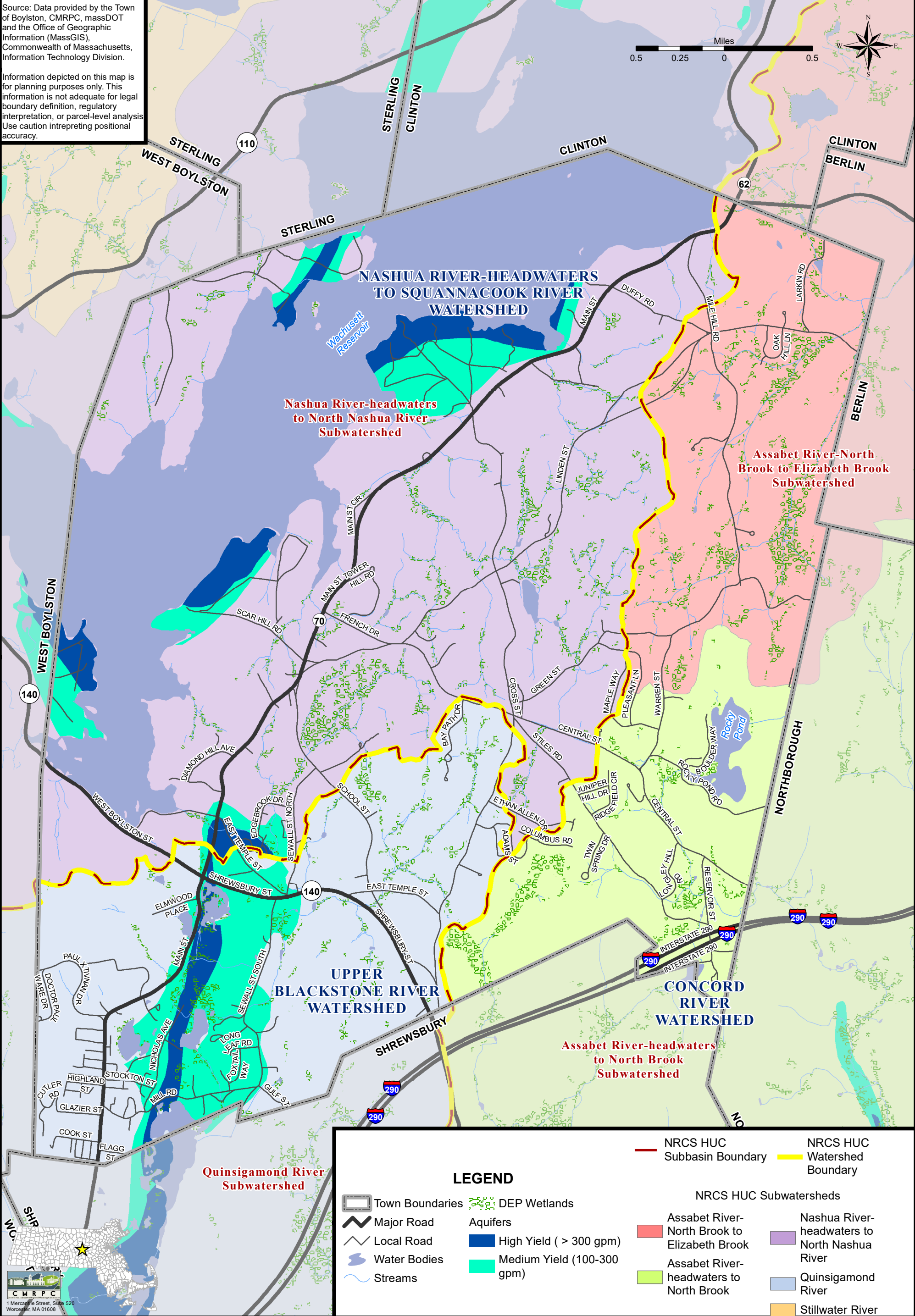
Town of Boylston, Massachusetts

WATER RESOURCES MAP (PART A)

OPEN SPACE AND RECREATION PLAN

Source: Data provided by the Town of Boylston, CMRPC, massDOT and the Office of Geographic Information (MassGIS), Commonwealth of Massachusetts, Information Technology Division.

Information depicted on this map is for planning purposes only. This information is not adequate for legal boundary definition, regulatory interpretation, or parcel-level analysis. Use caution interpreting positional accuracy.



Town of Boylston, Massachusetts

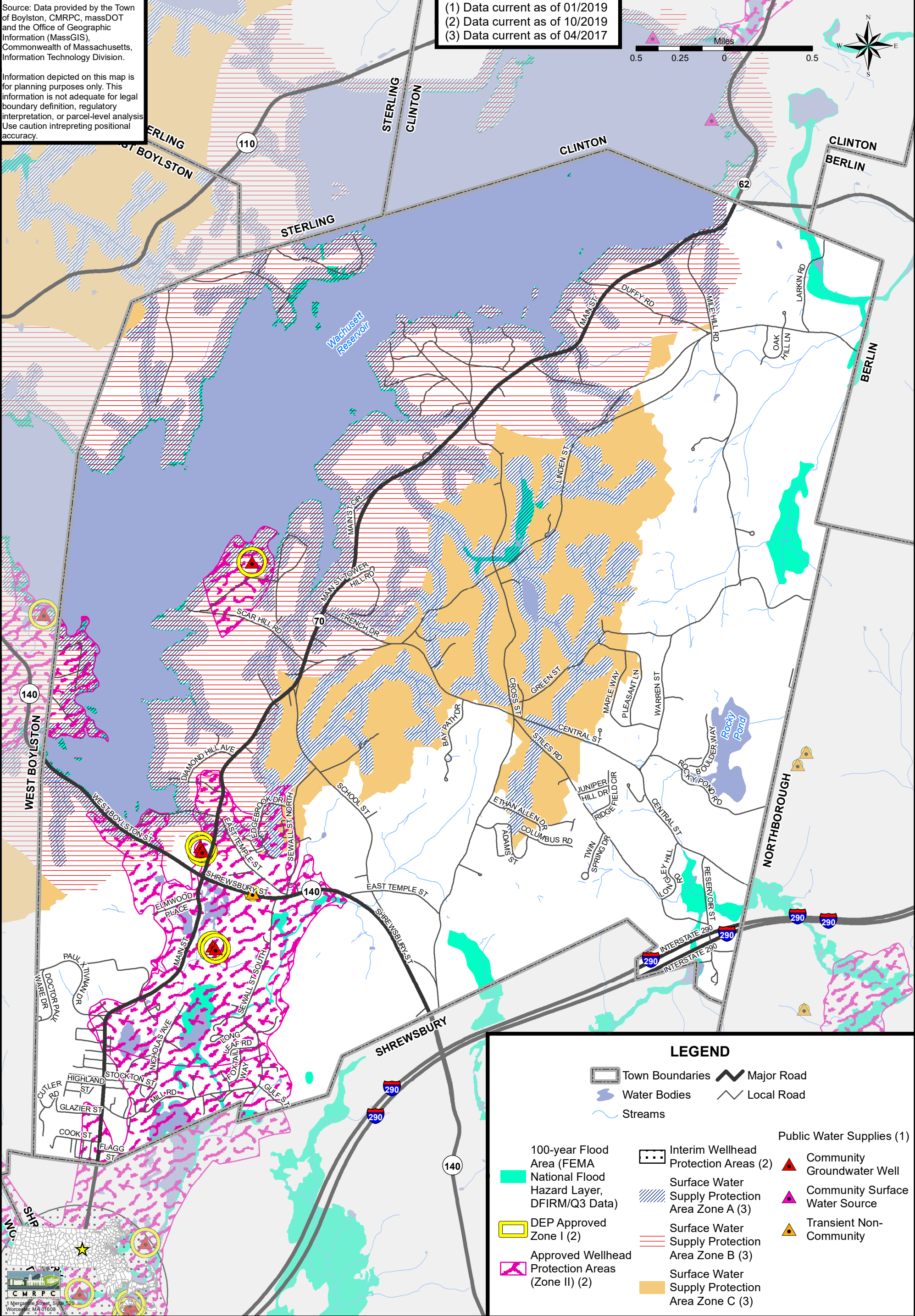
WATER RESOURCES MAP (PART B)

OPEN SPACE AND RECREATION PLAN

Source: Data provided by the Town of Boylston, CMRPC, massDOT and the Office of Geographic Information (MassGIS), Commonwealth of Massachusetts, Information Technology Division.

Information depicted on this map is for planning purposes only. This information is not adequate for legal boundary definition, regulatory interpretation, or parcel-level analysis. Use caution interpreting positional accuracy.

- (1) Data current as of 01/2019
- (2) Data current as of 10/2019
- (3) Data current as of 04/2017



LEGEND

Town Boundaries

Major Road

Water Bodies

Local Road

Streams

100-year Flood Area (FEMA National Flood Hazard Layer, DFIRM/Q3 Data)

DEP Approved Zone I (2)

Approved Wellhead Protection Areas (Zone II) (2)

Interim Wellhead Protection Areas (2)

Surface Water Supply Protection Area Zone A (3)

Surface Water Supply Protection Area Zone B (3)

Surface Water Supply Protection Area Zone C (3)

Community Groundwater Well

Community Surface Water Source

Transient Non-Community

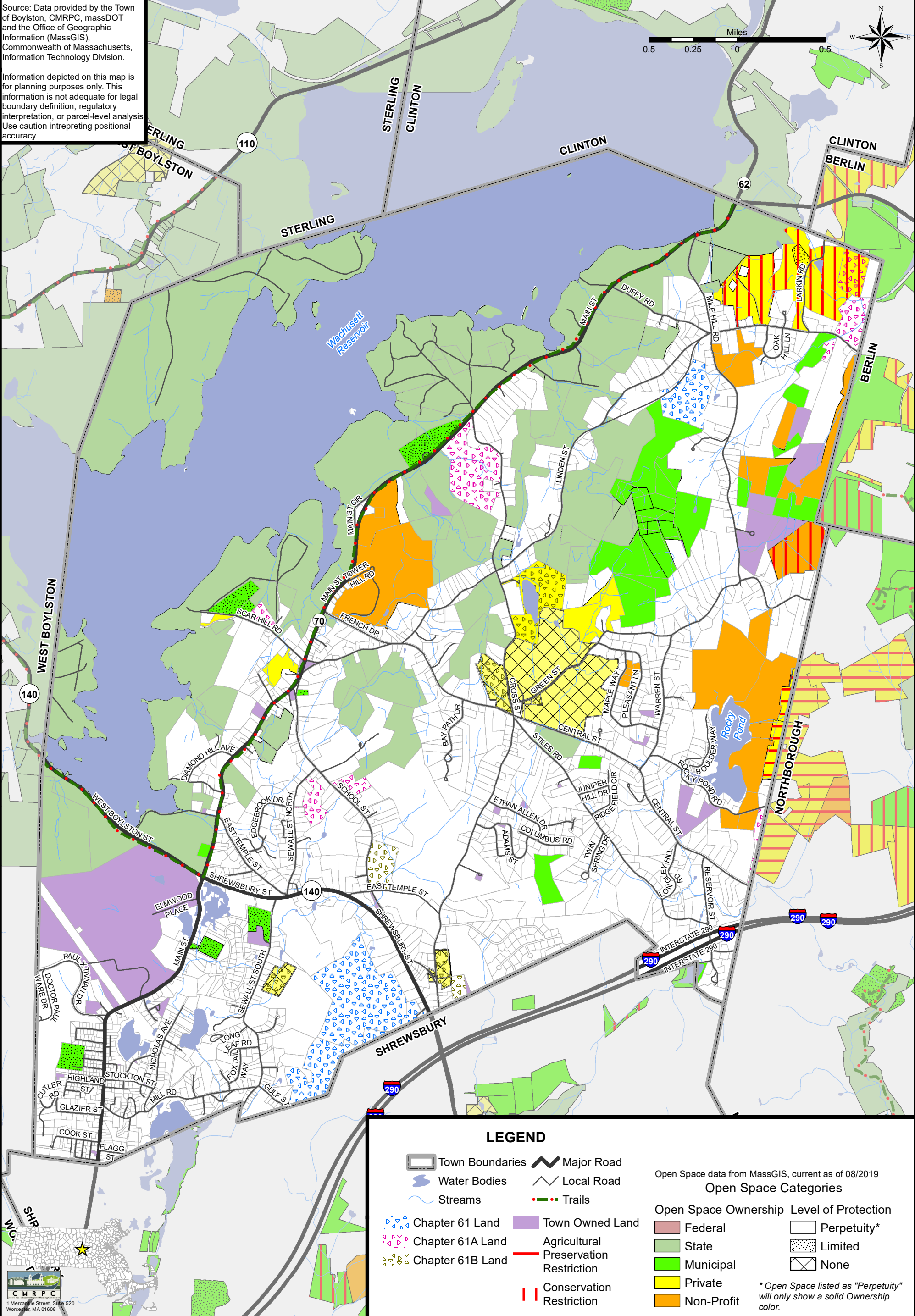
Public Water Supplies (1)

OPEN SPACE INVENTORY

OPEN SPACE AND RECREATION PLAN

Source: Data provided by the Town of Boylston, CMRPC, massDOT and the Office of Geographic Information (MassGIS), Commonwealth of Massachusetts, Information Technology Division.

Information depicted on this map is for planning purposes only. This information is not adequate for legal boundary definition, regulatory interpretation, or parcel-level analysis. Use caution interpreting positional accuracy.



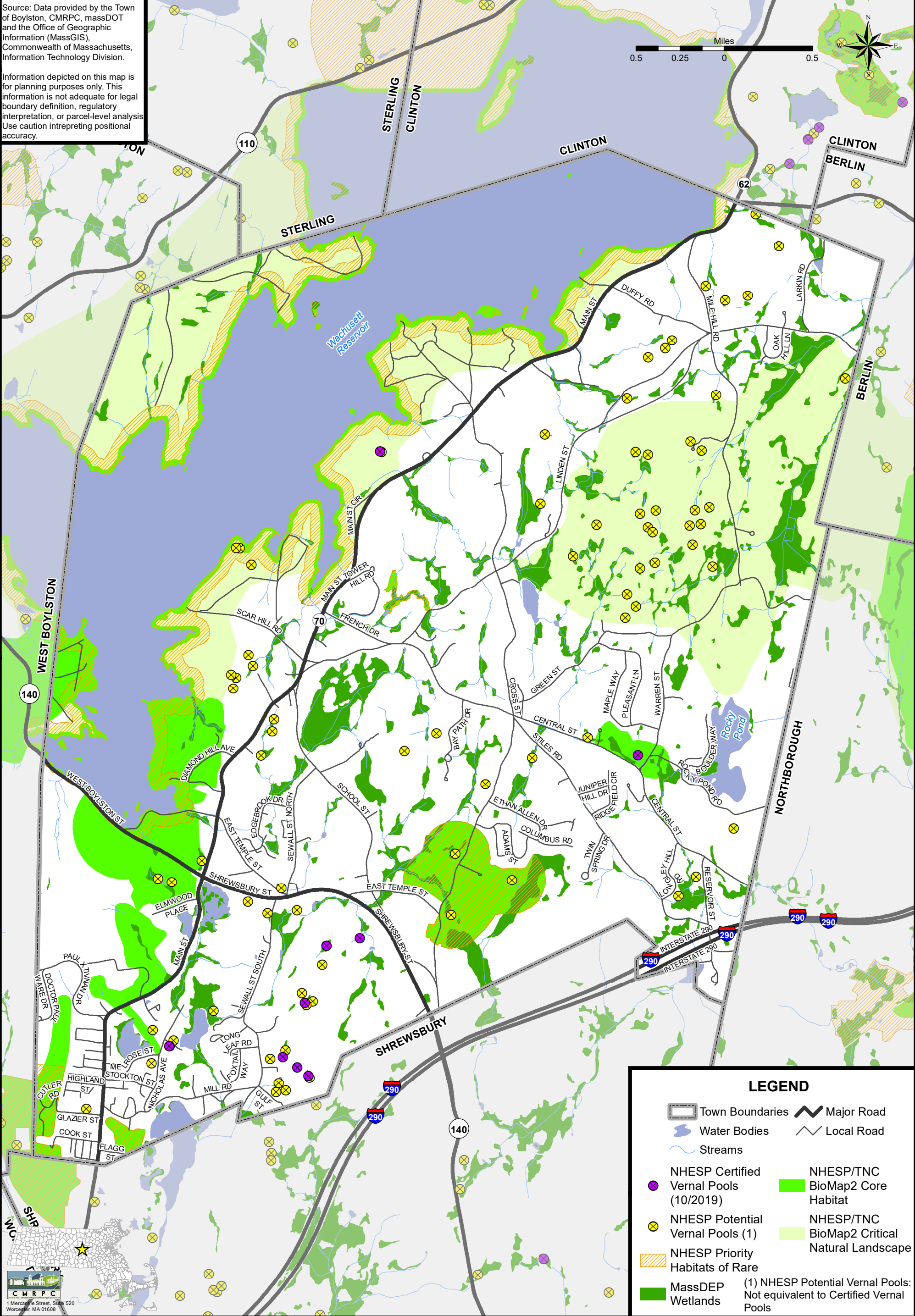
Town of Boylston, Massachusetts

HABITAT FEATURES

OPEN SPACE AND RECREATION PLAN

Source: Data provided by the Town of Boylston, CMRPC, massDOT and the Office of Geographic Information (MassGIS), Commonwealth of Massachusetts, Information Technology Division.

Information depicted on this map is for planning purposes only. This information is not adequate for legal boundary definition, regulatory interpretation, or parcel-level analysis. Use caution interpreting positional accuracy.



LEGEND

- Town Boundaries
- Major Road
- Water Bodies
- Local Road
- Streams

- NHESP Certified Vernal Pools (10/2019)
- NHESP Potential Vernal Pools (1)
- NHESP Priority Habitats of Rare
- MassDEP Wetlands
- NHESP/TNC BioMap2 Core Habitat
- NHESP/TNC BioMap2 Critical Natural Landscape
- (1) NHESP Potential Vernal Pools: Not equivalent to Certified Vernal Pools

Town of Boylston, Massachusetts